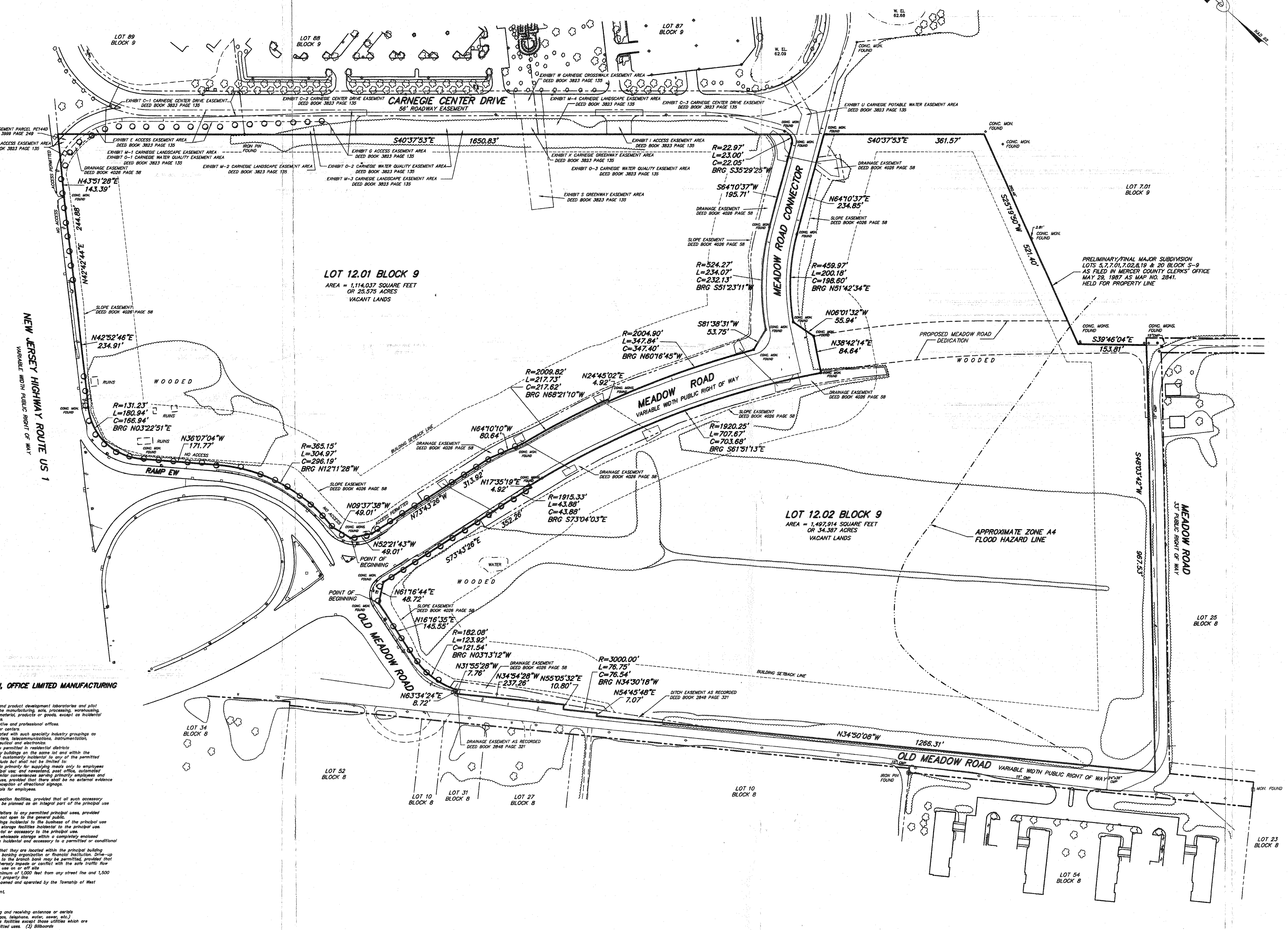


LOT 12.01 BLOCK 9

Beginning of a concrete monument found at the intersection of the northern abutment of Meadow Road with the eastern abutment of New Jersey Highway Route 51...

LOT 12.02 BLOCK 9

Beginning of a concrete monument found at the intersection of the southern abutment of Meadow Road with the eastern abutment of New Jersey Highway Route 51...

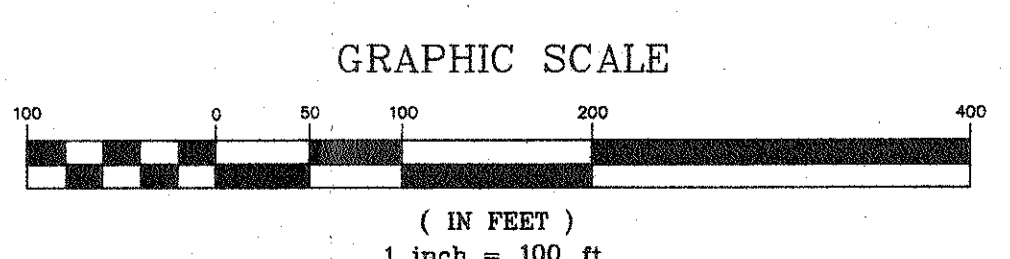


ZONE ROM-5 RESEARCH, OFFICE LIMITED MANUFACTURING

- Permitted uses: (1) Research, testing, analytical and product development laboratories and pilot plant facilities not involving the manufacturing, processing, warehousing, distribution or fabrication of materials products or goods...

COMMONWEALTH LAND TITLE INSURANCE COMPANY OF NEW JERSEY

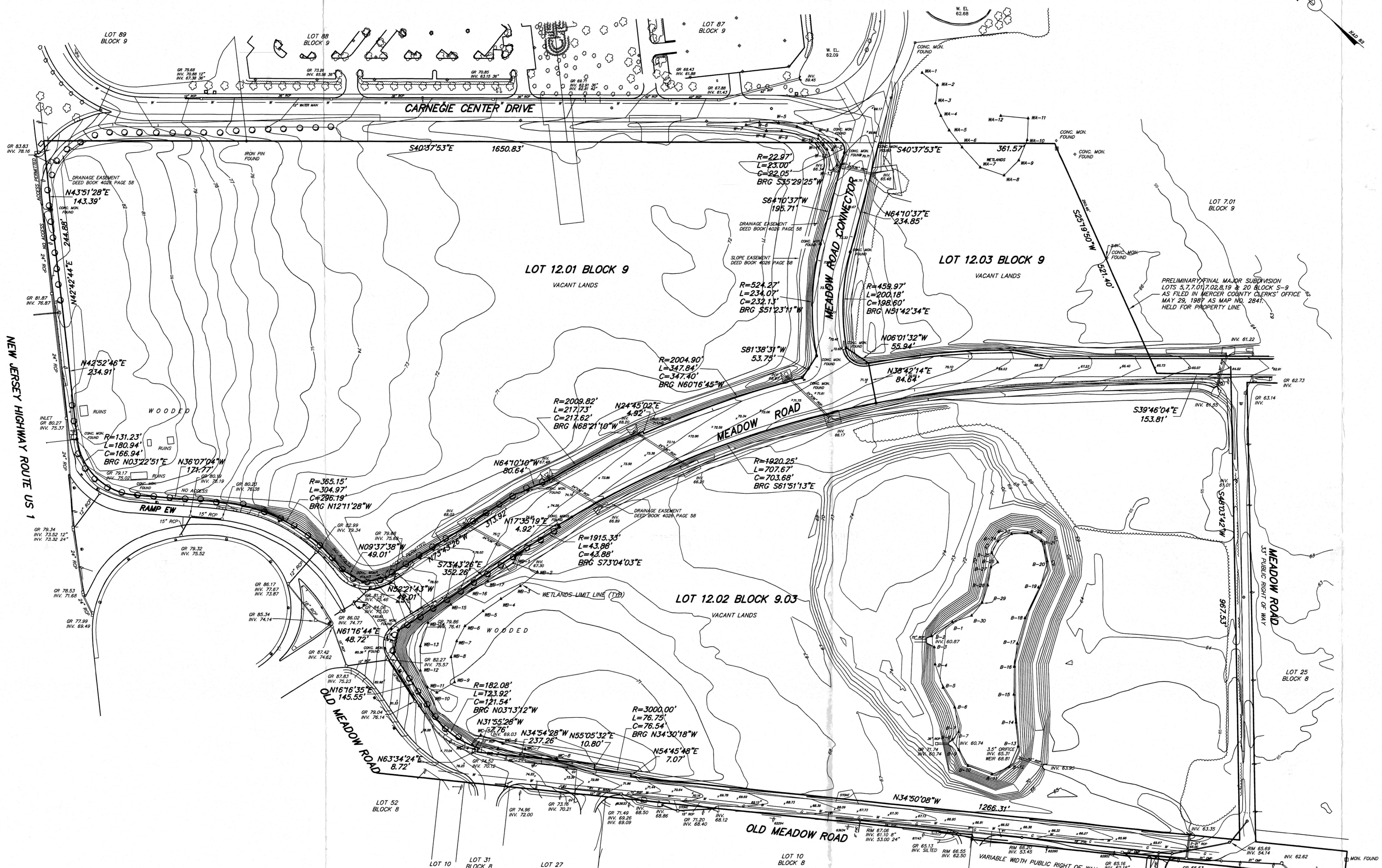
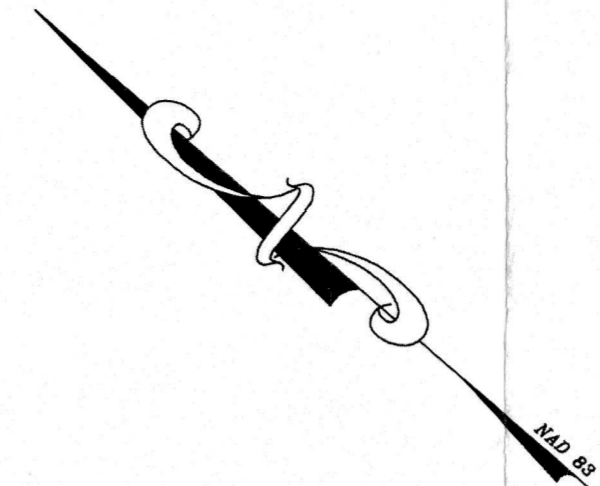
- 10. DECLARATION OF TAKING IN FAVOR OF THE STATE OF NEW JERSEY AS RECORDED IN DEED BOOK 2840 PAGE 321 AFFECTS THE SUBJECT PREMISES AS SHOWN HEREON.



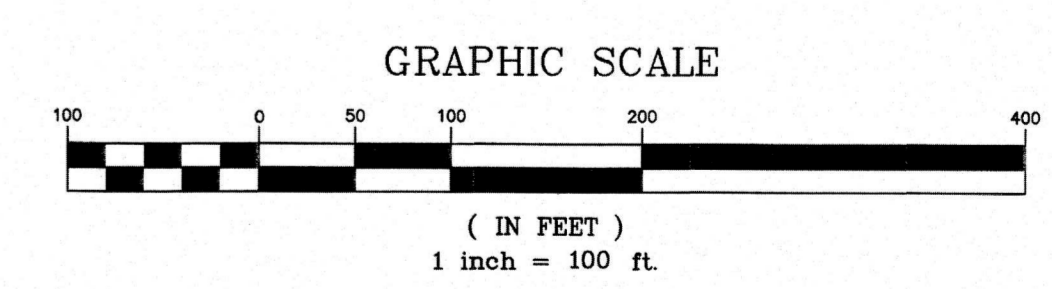
WAIVER OF SETTING CORNER MARKERS OBTAINED FROM THE ULTIMATE USER PURSUANT TO THE BOARD OF PROFESSIONAL ENGINEERS AND LAND SURVEYORS REGULATION, N.J.A.C. 13-45-5.1(D).

MAP OF SURVEY LOTS 12.01 & 12.02 BLOCK 9 WEST WINDSOR TOWNSHIP MERCER COUNTY NEW JERSEY. STIRES ASSOCIATES, P.A. ENGINEERS - PLANNERS - SURVEYORS. RICHARD C. MATHEWS PROFESSIONAL LAND SURVEYOR.

5:10012501.00.dwg Mon Jun 14 14:26:30 2010




- SYMBOL LEGEND**
- MONITORING WELL
 - GUARD POST
 - GAS VALVE
 - W WATER VALVE
 - W SANITARY SEWER CLEANOUT
 - UTILITY MANHOLE
 - LIGHT POLE
 - FOOT LIGHT
 - HANDICAP SPACE
 - HYDRANT
 - SIGN (ROAD)
 - SIGN (PRIVATE)
 - UTILITY POLE
 - GUY ANCHOR
 - RILEY
 - ELECTRIC JUNCTION BOX
 - FENCE
 - ELECTRIC/TELEPHONE CABLES
 - GAS MAIN
 - WATER MAIN
 - STORM SEWER PIPE
 - SANITARY SEWER PIPE
 - N NORTH
 - S SOUTH
 - E EAST
 - W WEST
 - ° ANGULAR DEGREES
 - ' ANGULAR MINUTES
 - " ANGULAR SECONDS
 - Δ CENTRAL ANGLE
 - R RADIUS
 - L LENGTH
 - C CHORD
 - BRG CHORD BEARING
 - CONCRETE



TOPOGRAPHIC SURVEY

LOTS 12.01 & 12.03 BLOCK 9
LOT 12.02 BLOCK 9.03

WEST WINDSOR TOWNSHIP MERCER COUNTY NEW JERSEY



STIRES ASSOCIATES, P.A.
ENGINEERS - PLANNERS - SURVEYORS
43 West High Street, Somerville, New Jersey 08876
Phone (908) 725-0230 Fax (908) 707-0831

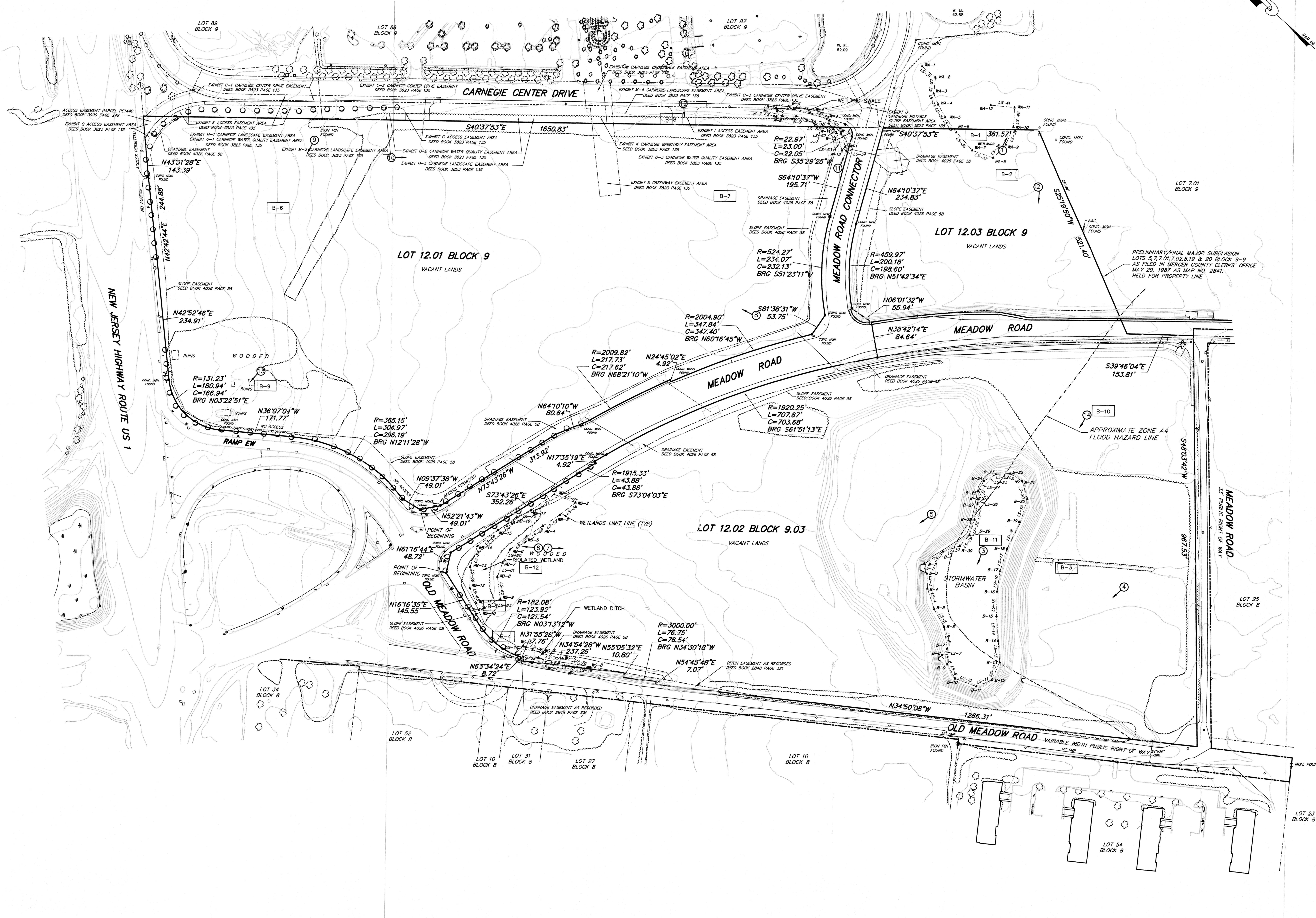
DESIGNED BY: RICHARD C. MATHEWS
PROFESSIONAL LAND SURVEYOR
N.J. LICENSE NO. 29353
DATE: 03/17/2020

SCALE: 1" = 100'
PROJECT NO. 17227

SHEET NUMBER: _____ OF _____

DATE: _____ REVISION: _____ BY: _____

CAUTION: If this document does not contain the raised impression seal of the Professional Engineer, it is not an authorized original document and may have been altered.

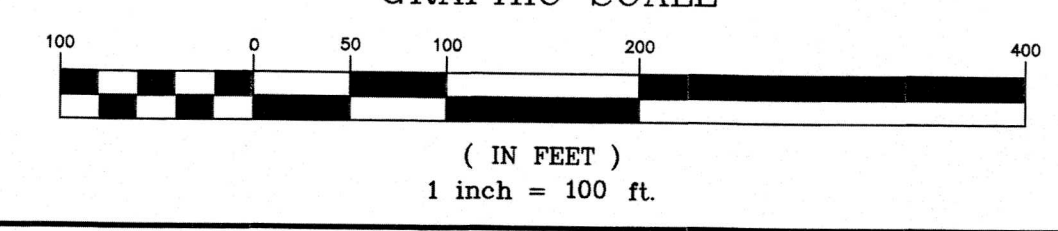


LEGEND

- PHOTO LOCATION AND DIRECTION
- WETLAND FLAG W/IDENTIFICATION
- WETLAND LINE SEGMENT
- WETLAND DATA SHEET LOCATION

WETLANDS DELINEATED BY ECOSCIENCES IN JUNE 2016

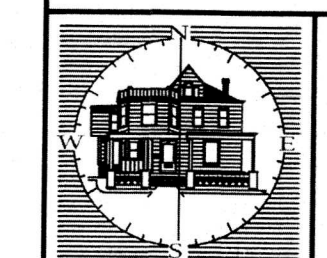
GRAPHIC SCALE



WETLANDS MAP

LOTS 12.01 & 12.03 BLOCK 9
LOT 12.02 BLOCK 9.03

WEST WINDSOR TOWNSHIP MERCER COUNTY NEW JERSEY

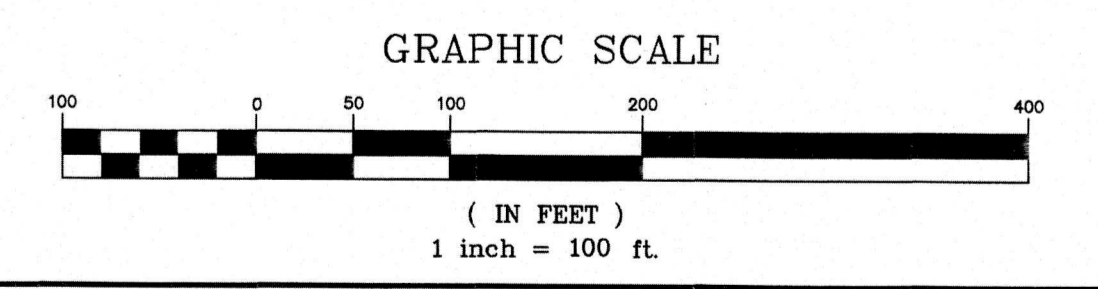
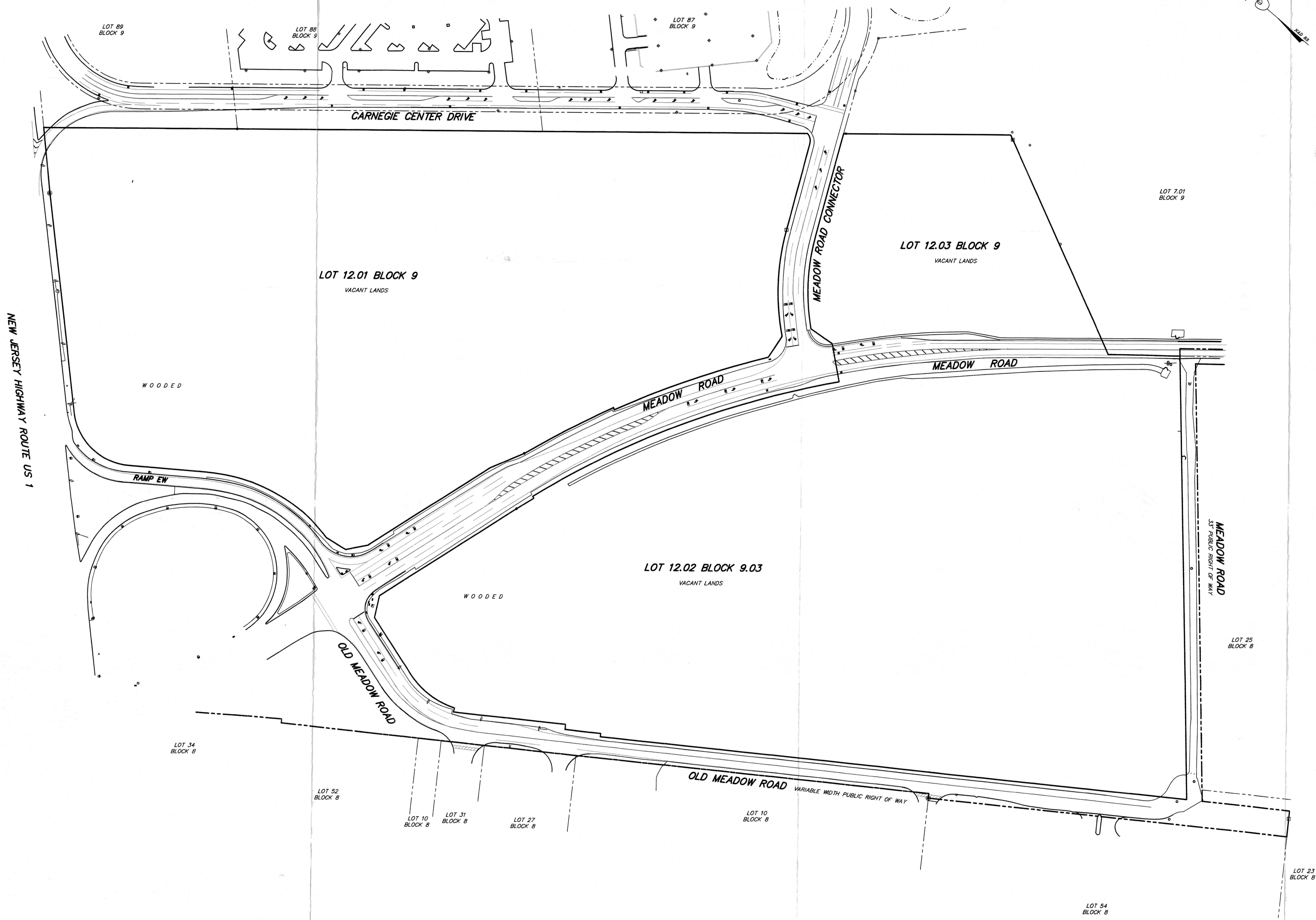
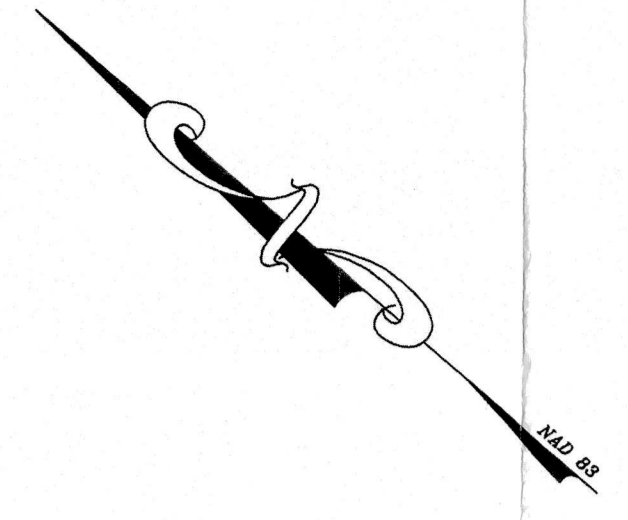


STIRES ASSOCIATES, P.A.
ENGINEERS - PLANNERS - SURVEYORS

43 West High Street, Somerville, New Jersey 08876
Phone (908) 725-0230 Fax (908) 707-0831

RICHARD C. MATHEWS PROFESSIONAL LAND SURVEYOR <i>R.C. Mathews</i>		DESIGNED BY: DRAWN BY: ED/PAJ CHECKED BY: RCM
DATE: 03/17/2020		SHEET NUMBER
SCALE: 1" = 100'		PROJECT No. 16182
DATE	REVISION	BY

CAUTION: If this document does not contain the noted signature and seal of the professional, it is not an authorized original document and may have been altered.



STRIPING PLAN

LOTS 12.01 & 12.03 BLOCK 9
LOT 12.02 BLOCK 9.03

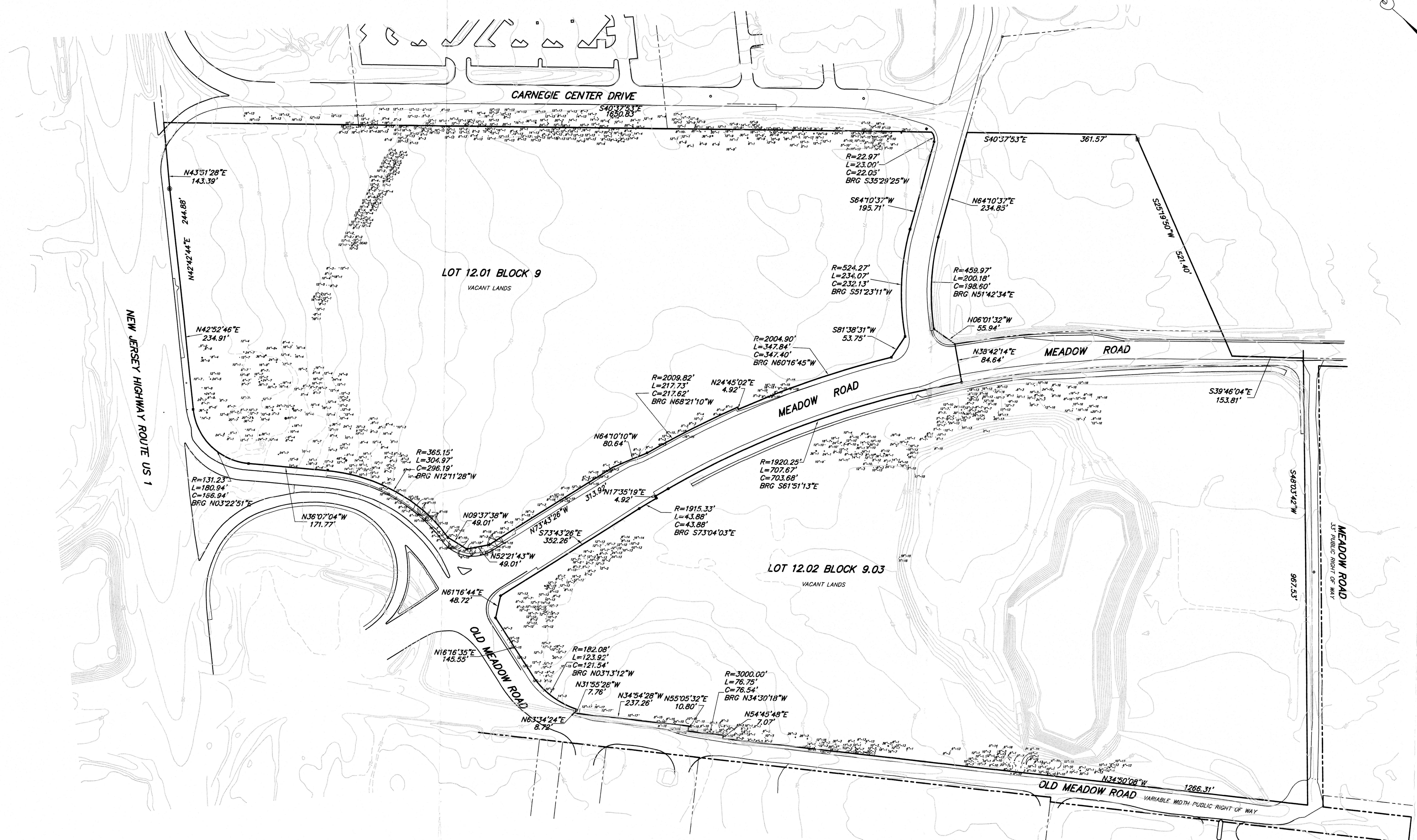
WEST WINDSOR TOWNSHIP MERCER COUNTY NEW JERSEY

STIRES ASSOCIATES, P.A.
ENGINEERS - PLANNERS - SURVEYORS
43 West High Street, Somerville, New Jersey 08876
Phone (908) 725-0230 Fax (908) 707-0831

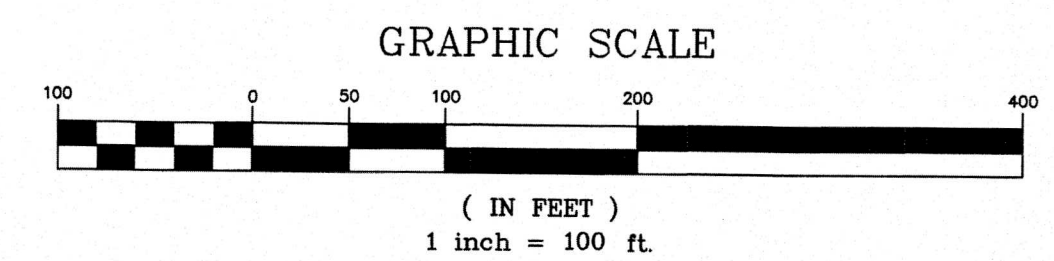
RICHARD C. MATHEWS PROFESSIONAL LAND SURVEYOR <i>Richard C. Mathews</i>	N.J. LICENSE No. 29353 DATE 3/17/2020 SCALE: 1" = 100' PROJECT No. 19168
DESIGNED BY:	DRAWN BY:
CHECKED BY:	SHEET NUMBER

CAUTION: If this document does not contain the raised impression seal of the professional, it is not an authorized original document and may have been altered.

C:\P19168\STRIPING\Map1



- TREE LEGEND
- 1 - CHERRY
 - 2 - SWEETGUM
 - 3 - ASH
 - 4 - BOWLEDER
 - 5 - OAK
 - 6 - DOGWOOD
 - 7 - MAPLE
 - 8 - ELM
 - 9 - WALNUT
 - 10 - SASSAPARILLA
 - 11 - MULBERRY
 - 12 - HICKORY
 - 13 - GUM
 - 14 - BIRCH
 - 15 - SOUTHWEST
 - 16 - BEECH
 - 17 - POPLAR
 - 18 - BELLOW



TREE PLAN	
LOTS 12.01 & 12.03 BLOCK 9 LOT 12.02 BLOCK 9.03 WEST WINDSOR TOWNSHIP MERCER COUNTY NEW JERSEY	
STIRES ASSOCIATES, P.A. ENGINEERS - PLANNERS - SURVEYORS 43 West High Street, Somerville, New Jersey 08876 Phone (908) 725-0230 Fax (908) 707-0831	
RICHARD C. MATHEWS PROFESSIONAL LAND SURVEYOR N.J. LICENSE No. 29353 <i>Richard C. Mathews</i>	DESIGNED BY: DRAWN BY: EG/RAL CHECKED BY: RCM DATE: 3/17/2020 SCALE: 1" = 100' PROJECT No. 16182

DATE _____ REVISION _____ BY _____

02/19/2020 10:00 AM