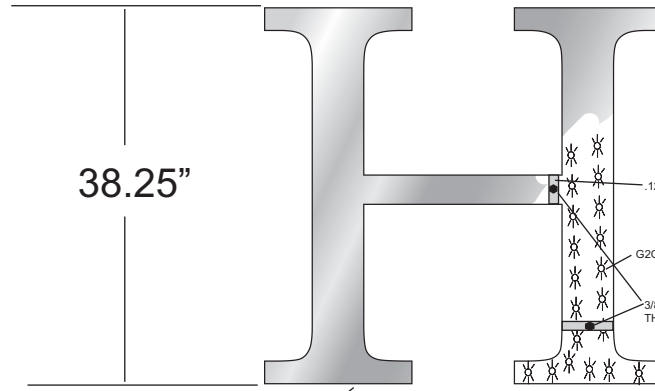
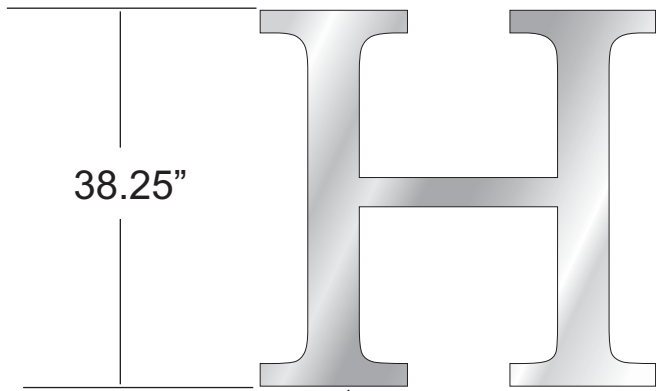




Hill Wallack

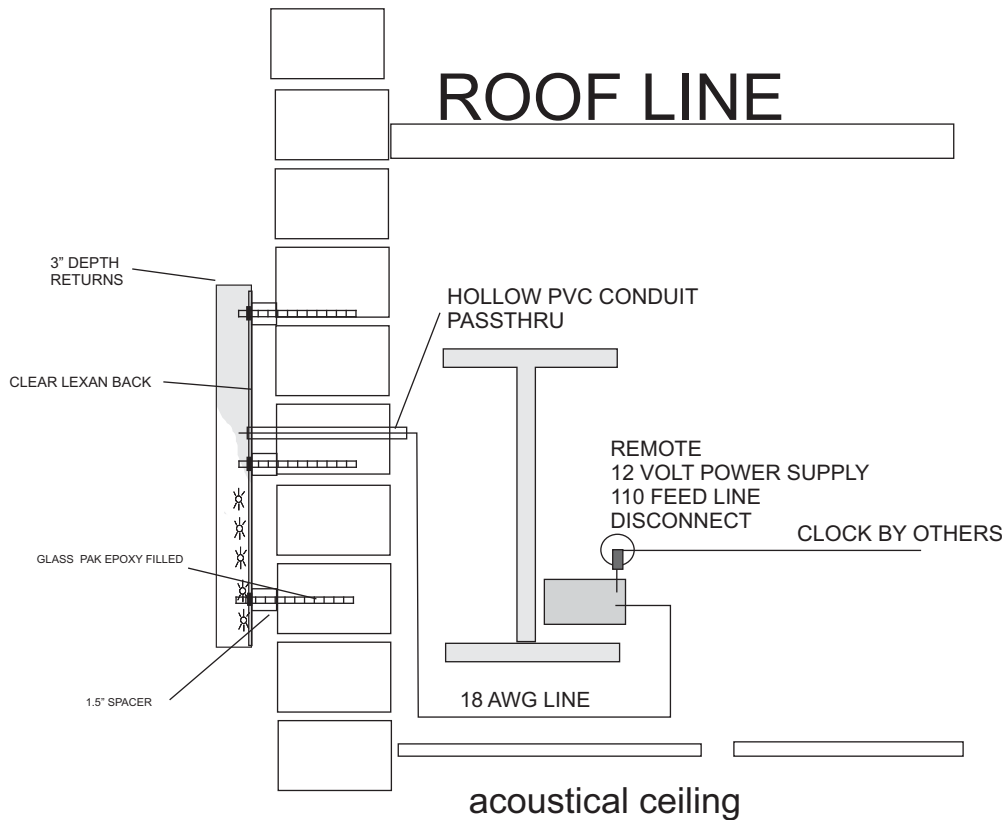
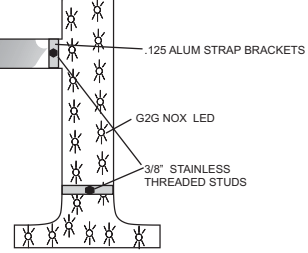
U-HAUL





.125 alum face
040 brushed silver anodized alum overlay

.125 alum face
040 brushed silver anodized alum overlay



lighting cut sheet

www.g2glighting.com

G2G NOX STYLE
7500 KELVIN

REX
SIGN SYSTEMS Since 1925

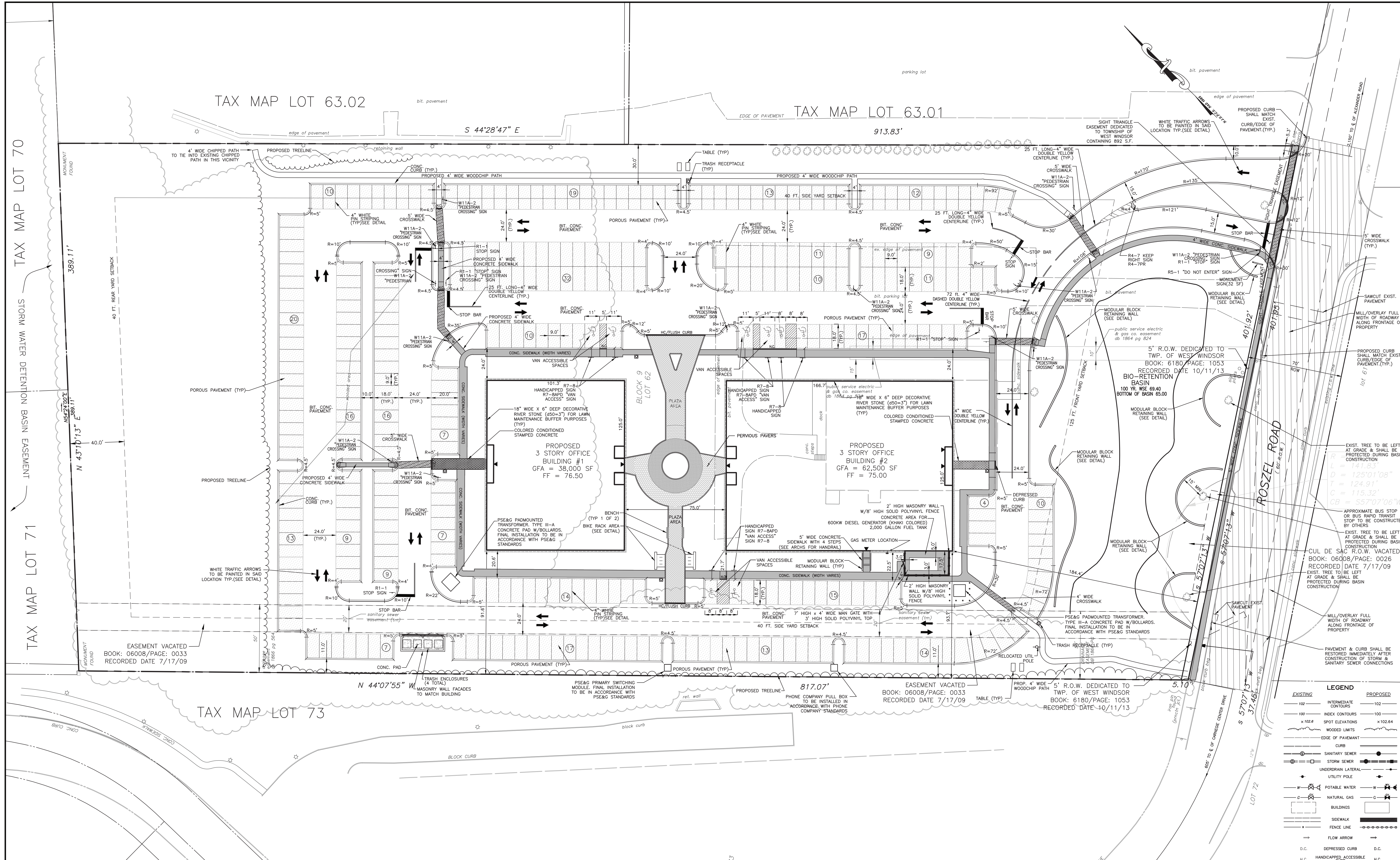
60 Steiner Ave Neptune City, NJ
732 774 1377 - fax 732 988 1509 - don@rexsigns.net

Client: Hill Wallack
19 Roszel Ave. West Windsor NJ
Halo Letter design
Dwg: Hill Wallack tech 2

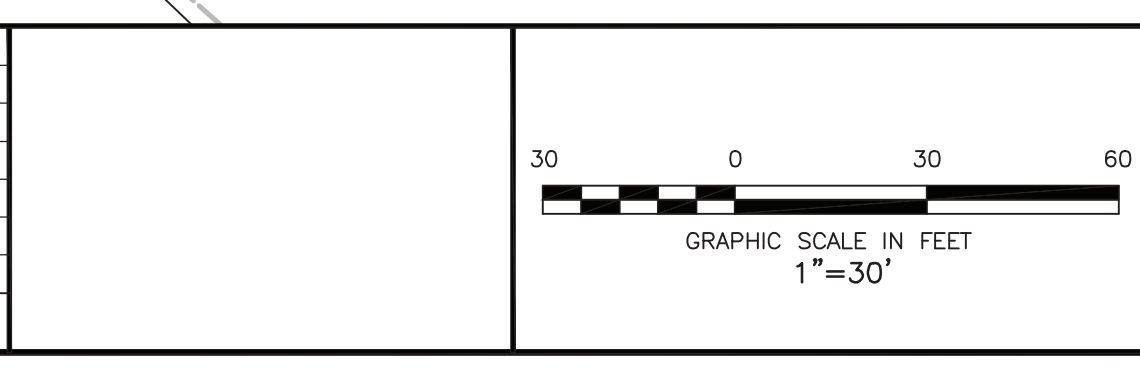


Hill Wallack

BUILDING SIGN



REVISION NO.	DATE	REVISION
16	07.08.14	FINAL AMENDED PERMIT & CONSTRUCTION SET
15	05.19.14	LAYOUT REVISIONS RELATED TO GENERATOR
14	05.15.14	UNDERDRAIN REVISIONS
13	05.12.14	PERMIT RESPONSE - R3 CONTROL #56864
12	04.23.14	METER FIT REVISIONS
11	04.11.14	SANITARY SEWER REVISIONS
10	03.12.14	PSE&G GAS SERVICE



JOSEPH D. HANRAHAN
 PROFESSIONAL ENGINEER, N.J. LIC. No. GE40339

HAMMER
 LAND ENGINEERING
 CERTIFICATE OF AUTHORIZATION #24GA28176300
 2640 HIGHWAY 70, SUITE 10B
 MANASQUAN, NJ 08736
 (TEL) 732.899.0898 (FAX) 888.712.4519

SITE PLAN
 AMENDED PRELIMINARY AND FINAL MAJOR SITE PLAN
 ROSZEL ROAD OFFICE BUILDINGS

TOWNSHIP OF WEST WINDSOR
 MERCER COUNTY
 NEW JERSEY

PROJECT NO. 12139
 DRAWN BY DEK
 SCALE 1"=30'

DATE 06/07/13
 DESIGNED BY CLW
 CHECKED BY JDH

HAMMER LAND ENGINEERING
 SHEET NO. 3 of 16

THIS DRAWING AND ALL INFORMATION CONTAINED HEREIN IS AUTHORIZED FOR USE ONLY BY THE PARTY FOR WHOM THE WORK WAS CONTRACTED OR TO WHOM IT IS CERTIFIED. THIS DRAWING MAY NOT BE COPIED, REUSED, DISCLOSED, DISTRIBUTED OR RELIED UPON FOR ANY OTHER PURPOSE WITHOUT THE WRITTEN CONSENT OF CERMINARA ARCHITECT. 2019, CERMINARA ARCHITECT COPYRIGHT ALL RIGHTS RESERVED



CARMINE CERMINARA, AIA
 ■ NJ C.7461
 ■ PA RA.012844.B

224 COURTYARD DRIVE
 HILLSBOROUGH, NJ 08844

19 ROSZEL ROAD

OFFICE BUILDING #2

19 ROSZEL ROAD
 TOWNSHIP OF WEST WINDSOR
 MERCER COUNTY, NJ 08550

SIGNAGE COMPARISON EAST ELEV.

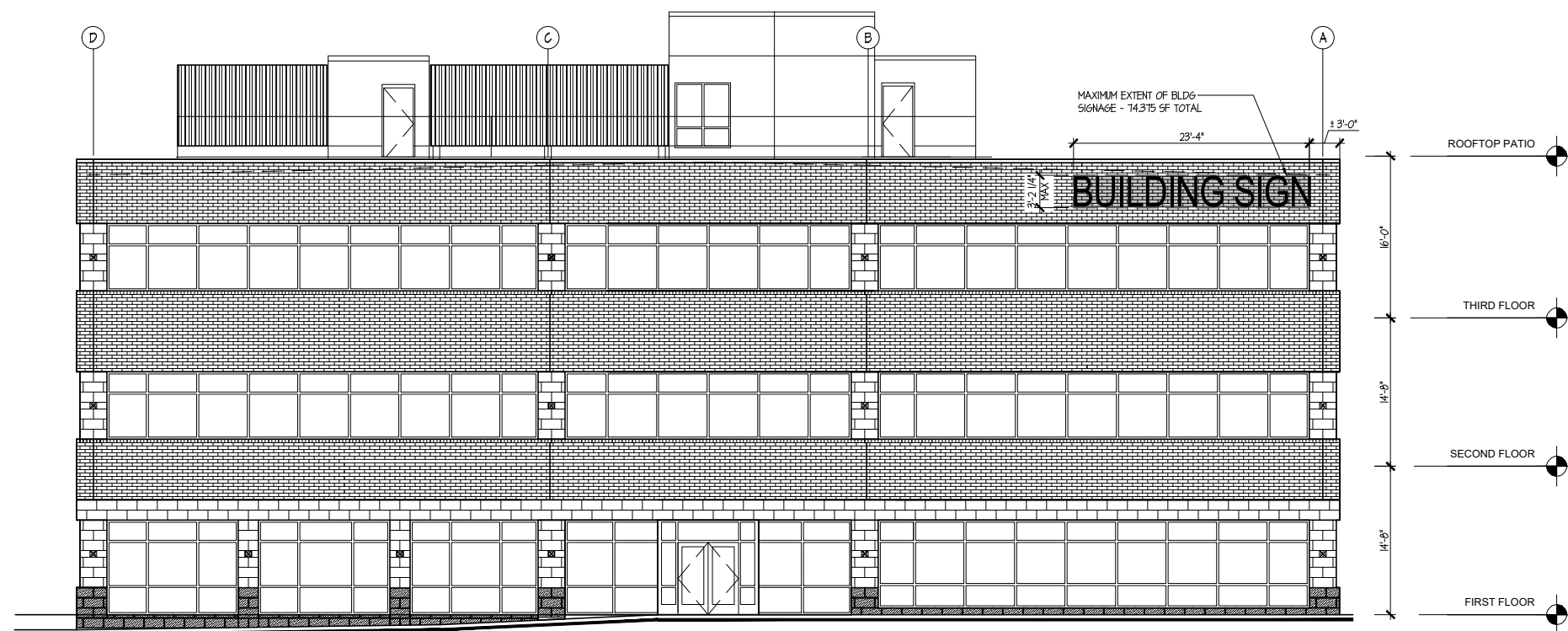
SCALE 1/8" = 1' - 0"

DATE REVISION
 4 MAY 20 --- --

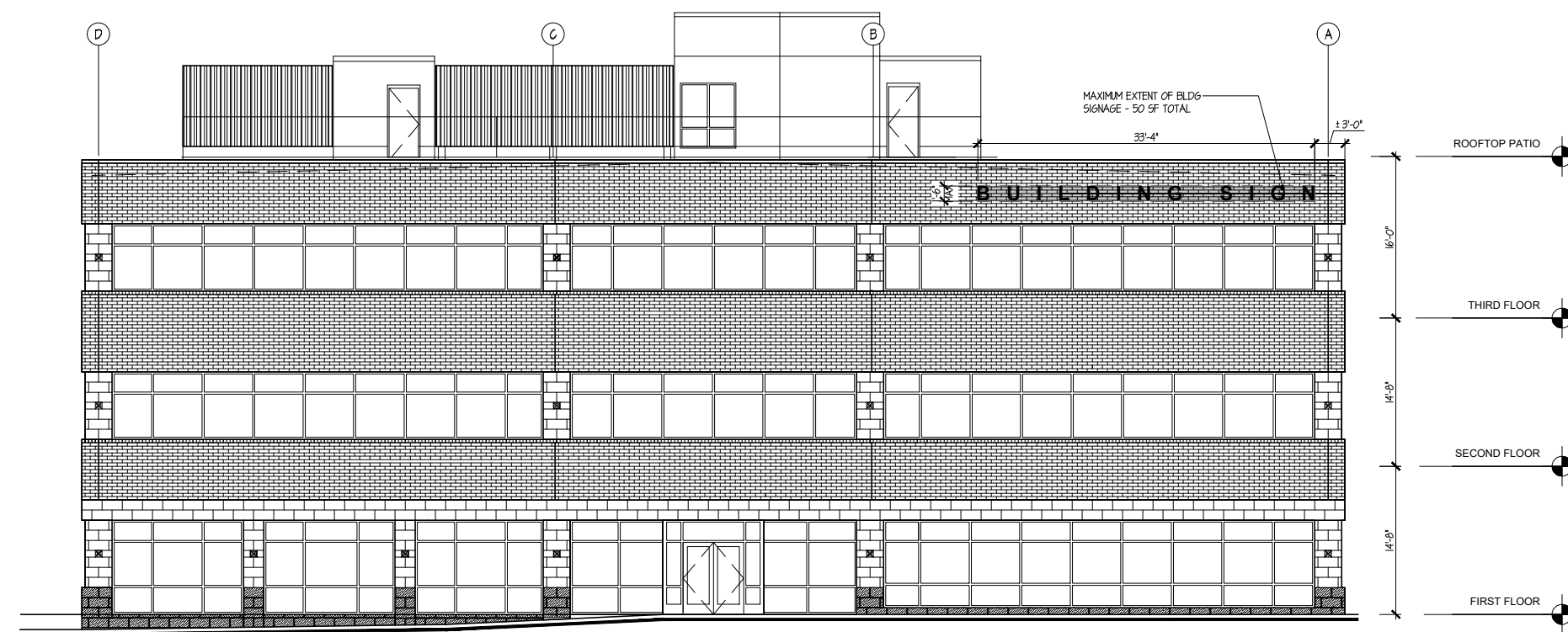
DRAWN BY
 JK

COMMISSION
 19044

DRAWING
 SK.01



2 EAST ELEVATION - PROPOSED SIGNAGE
 1/16" = 1' - 0"



1 EAST ELEVATION - PERMITTED SIGNAGE
 1/16" = 1' - 0"