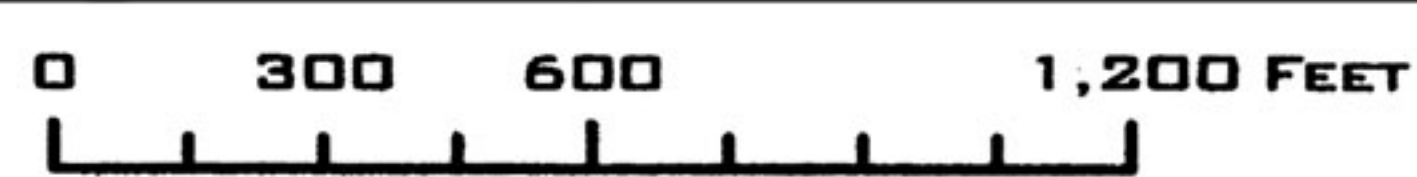
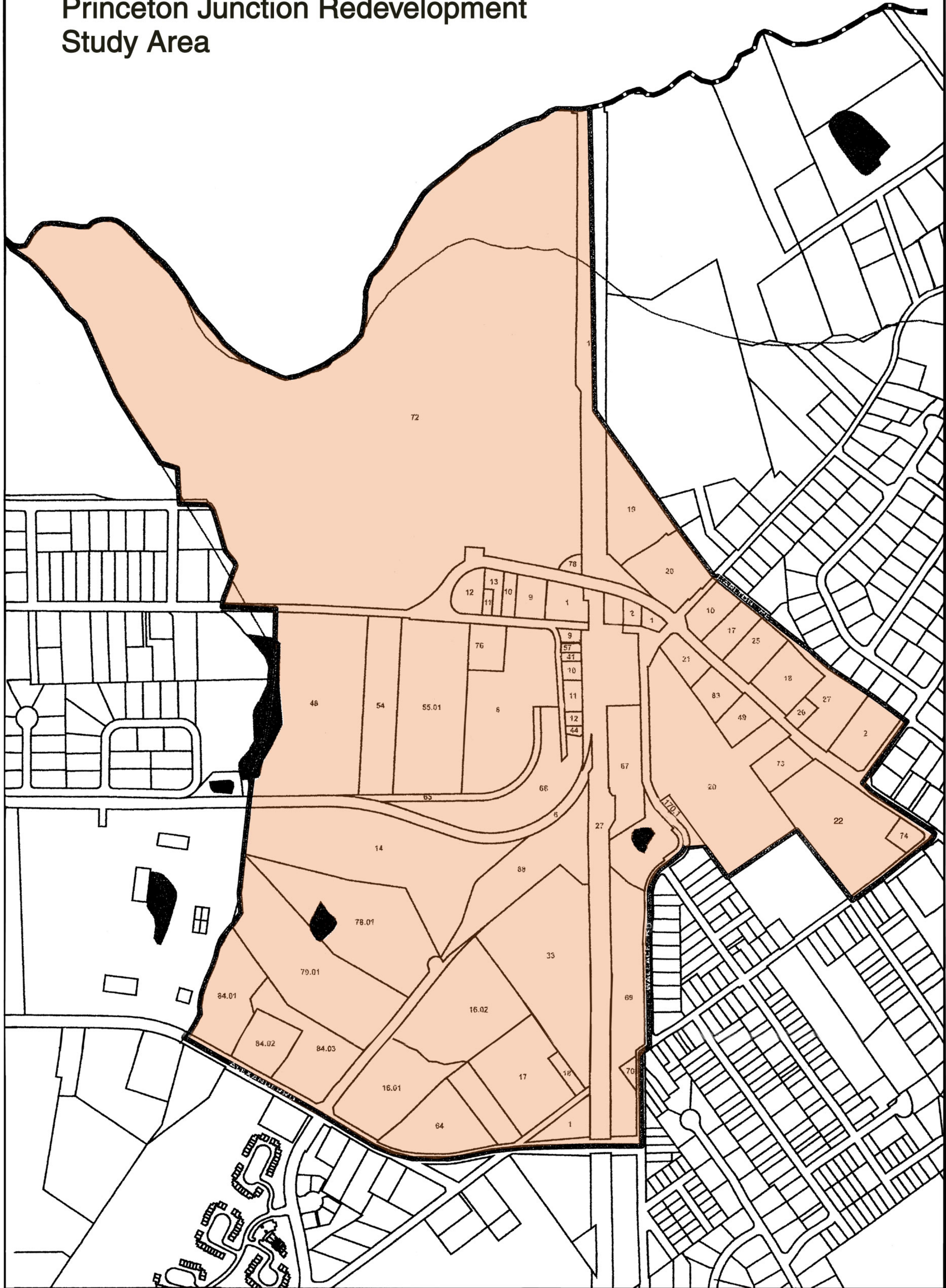


# Map 1 Princeton Junction Redevelopment Study Area



Color for Lot Numbers

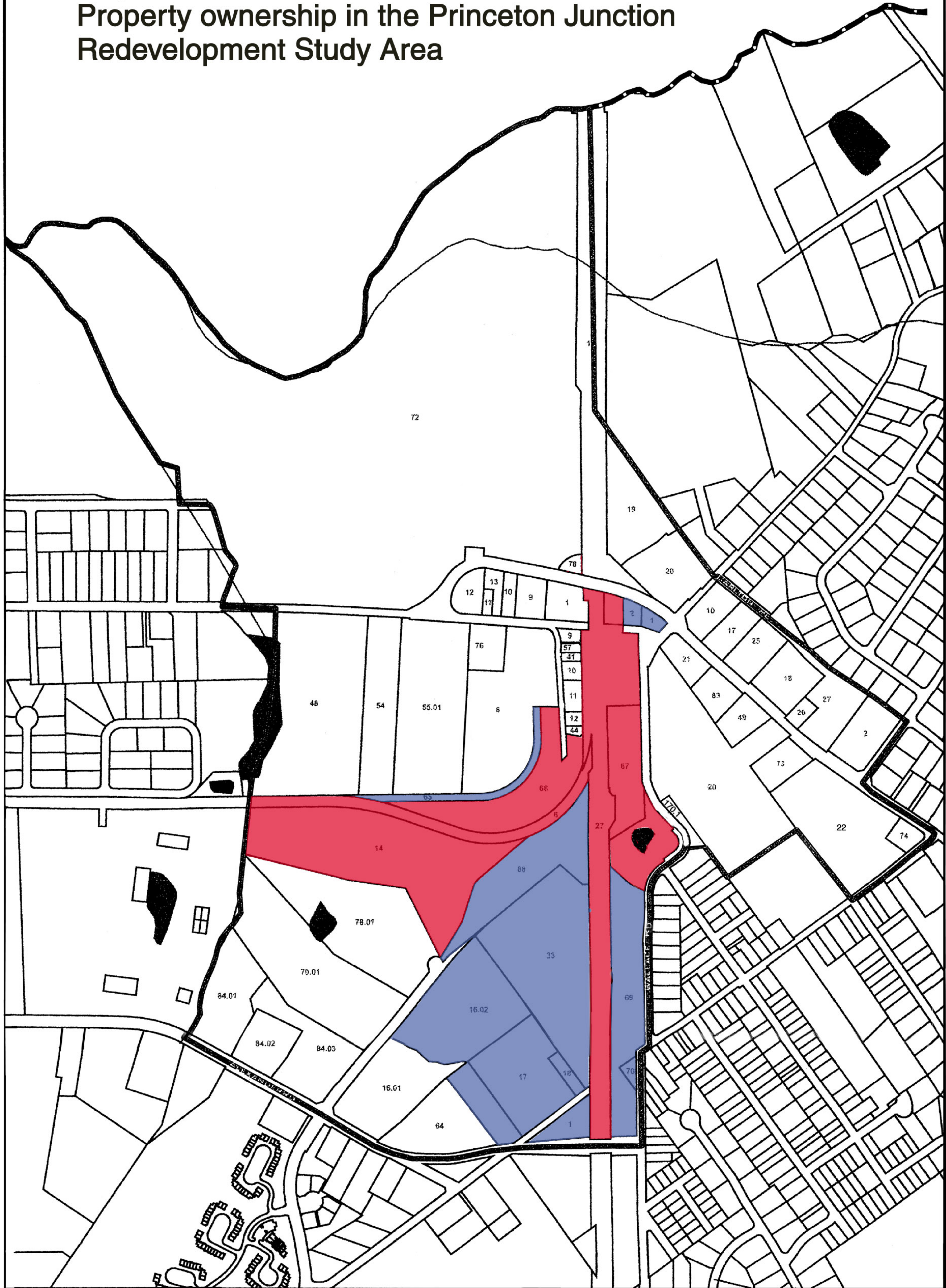
### LEGEND

- MUNICIPAL BOUNDARY
- REDEVELOPMENT AREA
- STREAMS
- LAKES
- PARCELS

Map 2  
Aerial Photograph of the Princeton Junction Study Area  
and its surroundings



# Map 3 Property ownership in the Princeton Junction Redevelopment Study Area



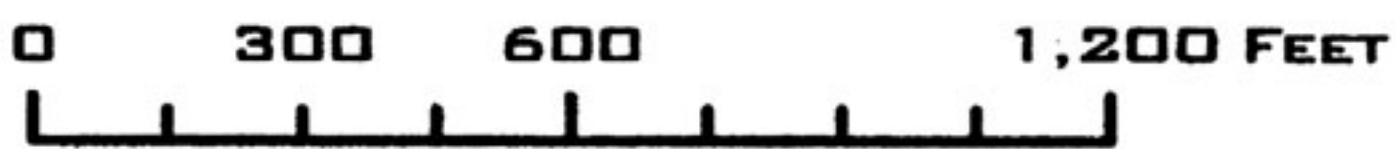
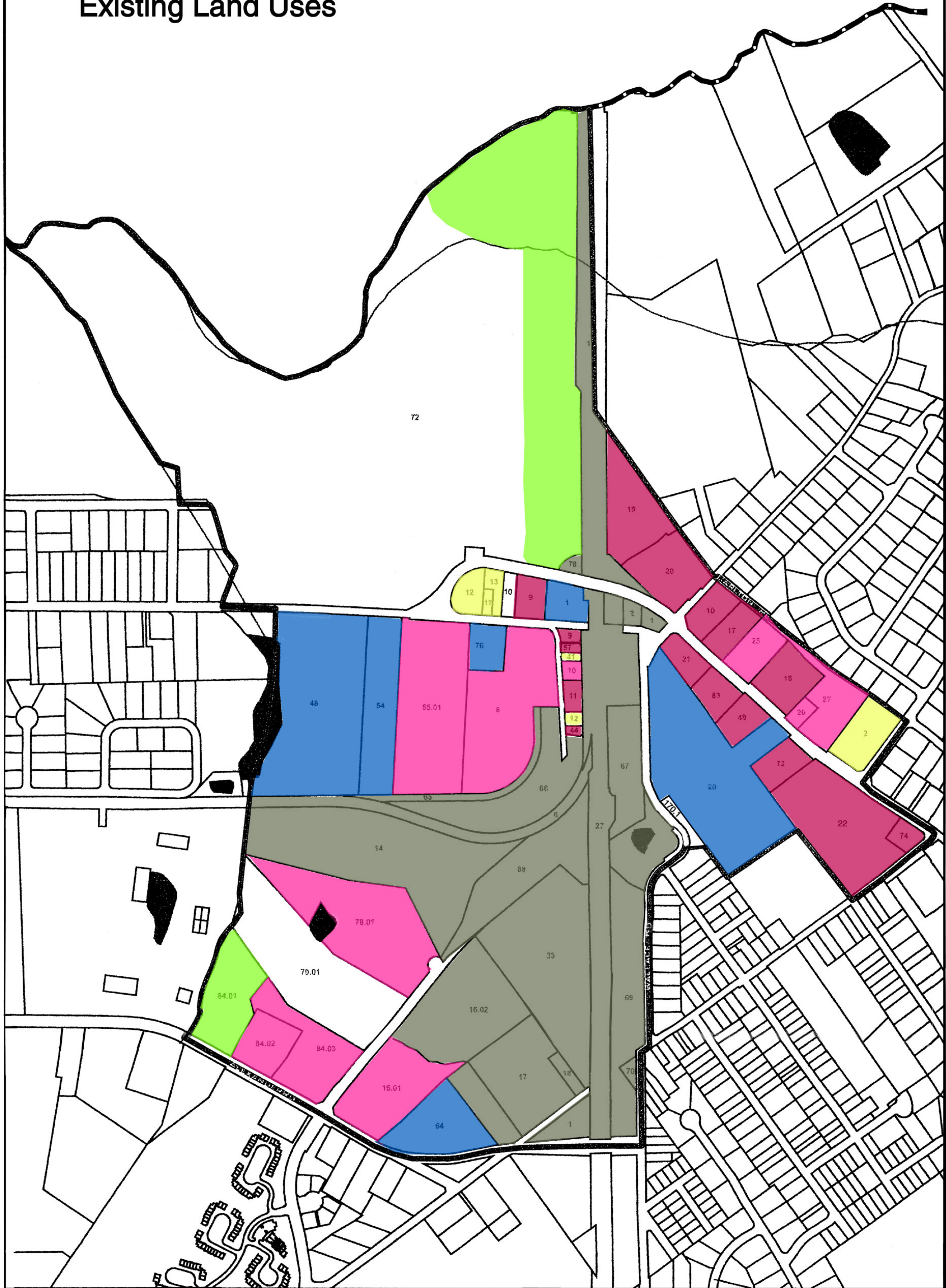
0 300 600 1,200 FEET

- RAILROAD OWNERSHIP
- PUBLIC OWNERSHIP
- PRIVATE OWNERSHIP

### LEGEND

- MUNICIPAL BOUNDARY
  - REDEVELOPMENT AREA
  - PARCELS
  - STREAMS
  - LAKES
- Color for Lot Numbers

# Map 4 Existing Land Uses

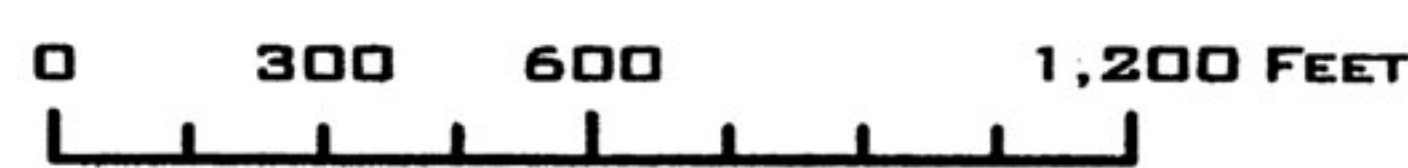
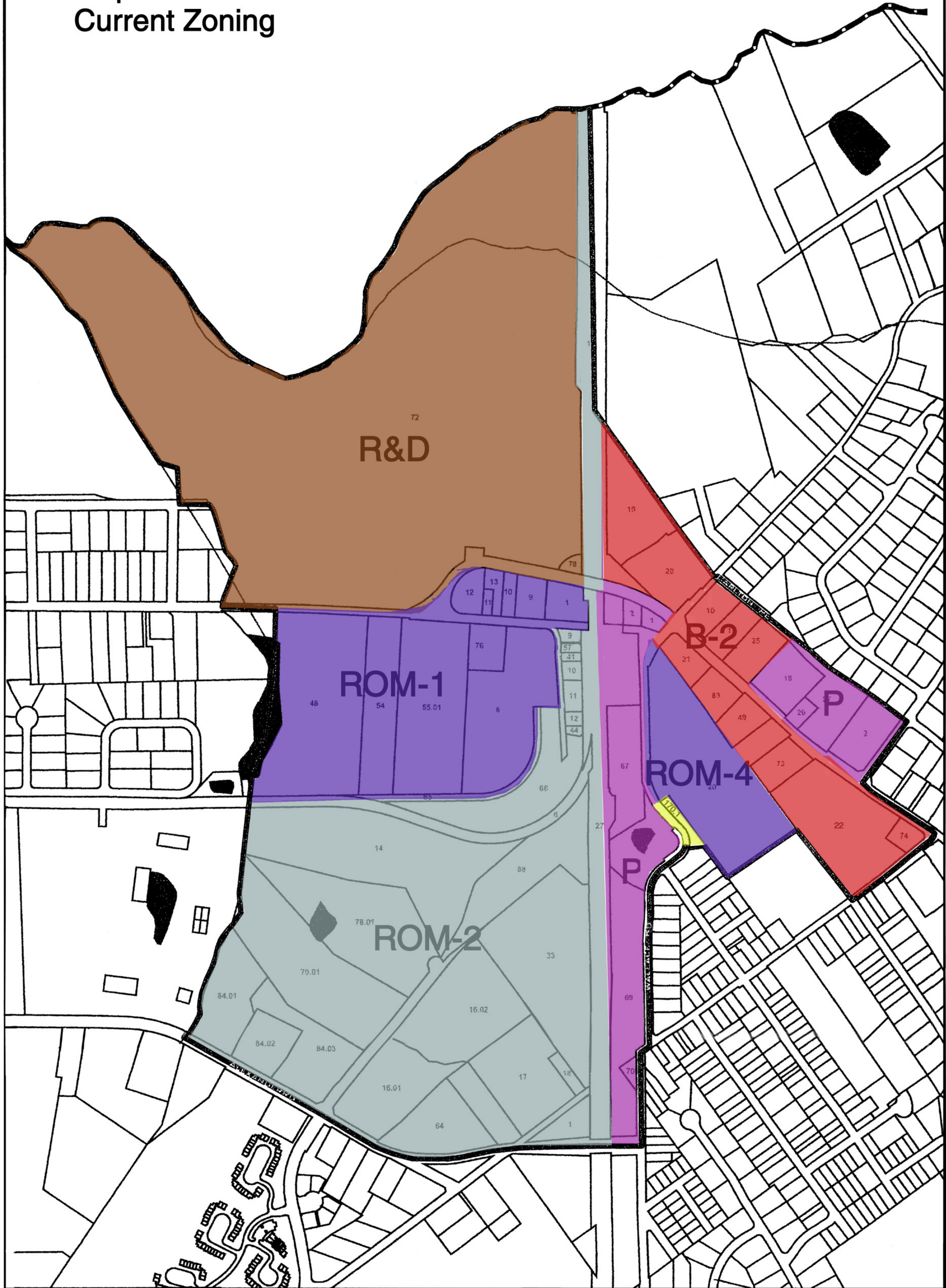


- RESIDENTIAL
- OFFICE
- GREENBELT/OPEN SPACE
- PUBLIC/RAILROAD
- INDUSTRIAL
- VACANT/UNDEVELOPED
- RETAIL COMMERCIAL

**LEGEND**

- MUNICIPAL BOUNDARY
  - REDEVELOPMENT AREA
  - PARCELS
  - STREAMS
  - LAKES
- Color for Lot Numbers

# Map 5 Current Zoning

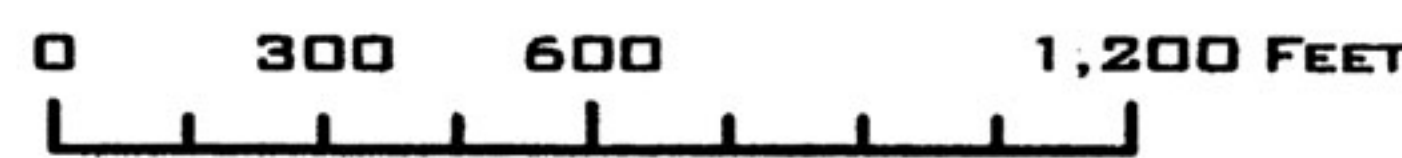


Color for Lot Numbers

### LEGEND

- MUNICIPAL BOUNDARY
- REDEVELOPMENT AREA
- STREAMS
- LAKES
- PARCELS

# Map 6 Environmental Constraints



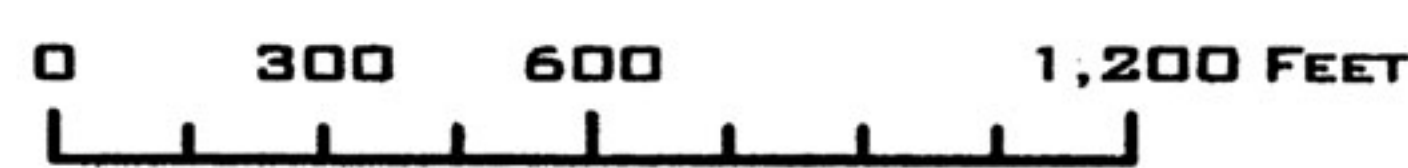
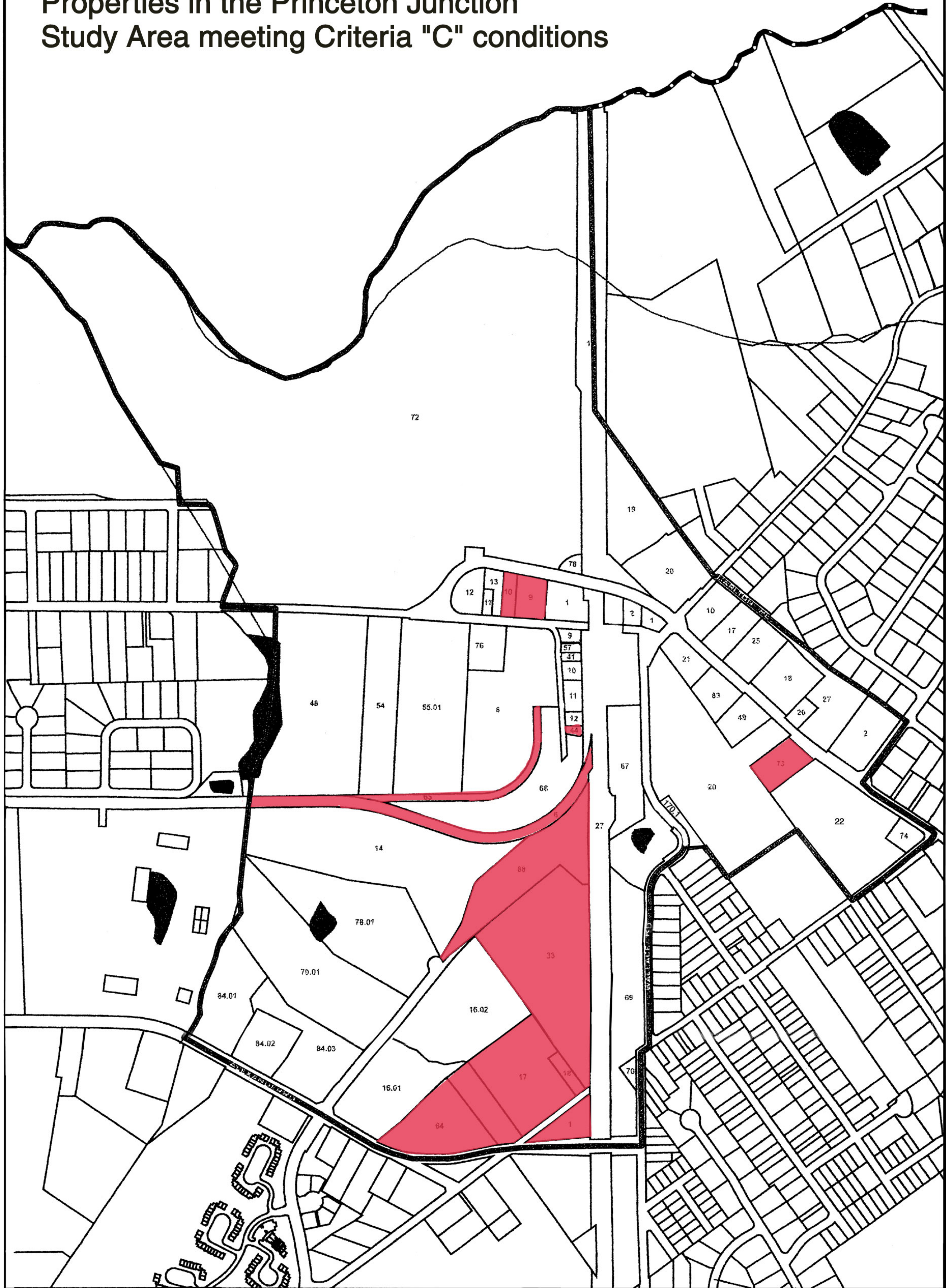
**MASER**  
CONSULTING P.A.  
Consulting, Municipal & Environmental Engineers  
Planners - Surveyors - Landscape Architects

Color for Lot Numbers

### LEGEND

-  MUNICIPAL BOUNDARY
-  REDEVELOPMENT AREA
-  STREAMS
-  LAKES
-  PARCELS

**Map 8**  
**Properties in the Princeton Junction**  
**Study Area meeting Criteria "C" conditions**

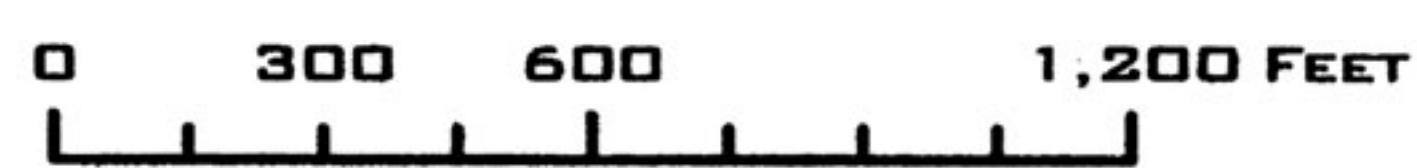
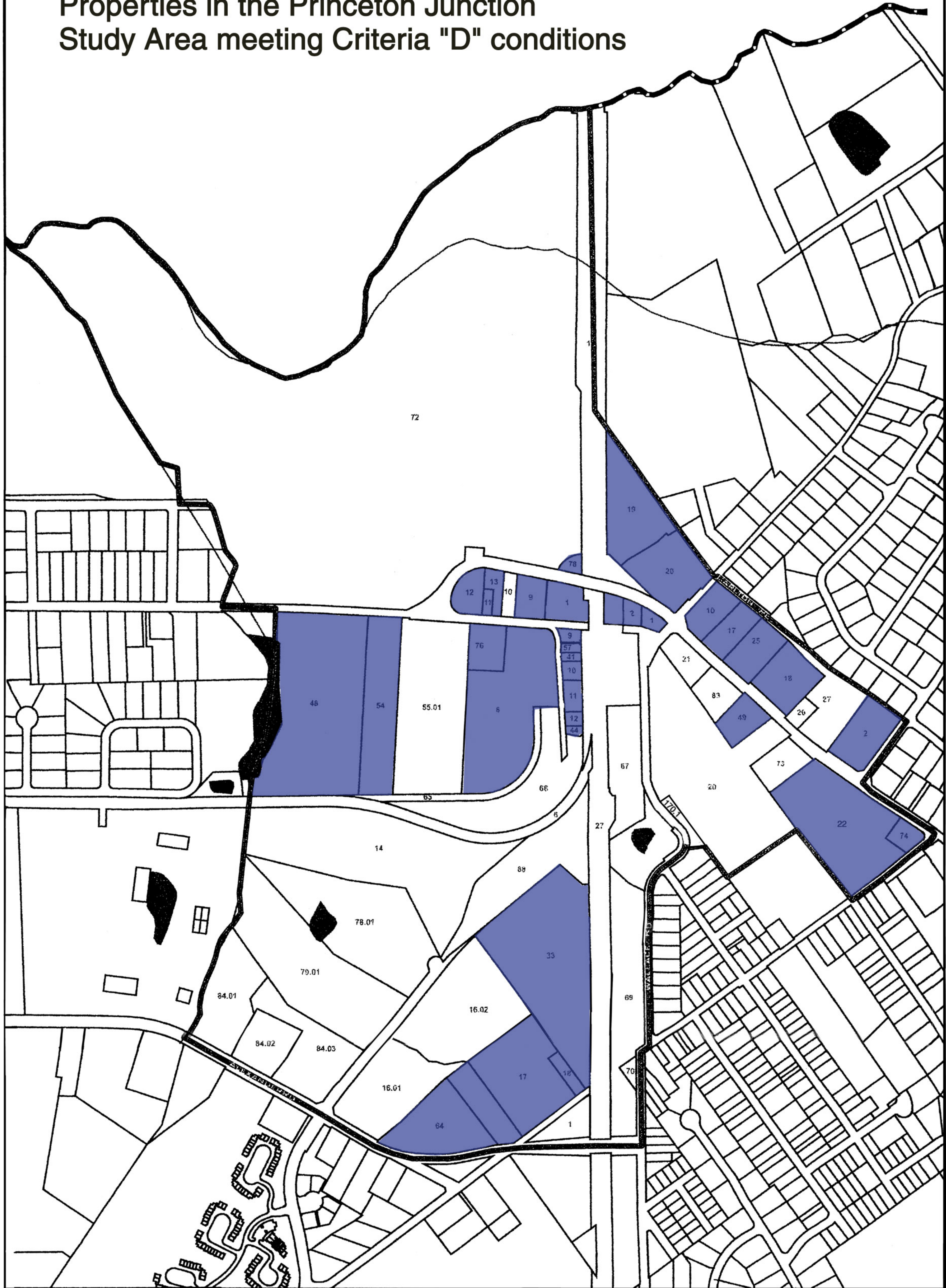


Color for Lot Numbers

**LEGEND**

- MUNICIPAL BOUNDARY
- STREAMS
- REDEVELOPMENT AREA
- LAKES
- PARCELS

**Map 9**  
**Properties in the Princeton Junction**  
**Study Area meeting Criteria "D" conditions**



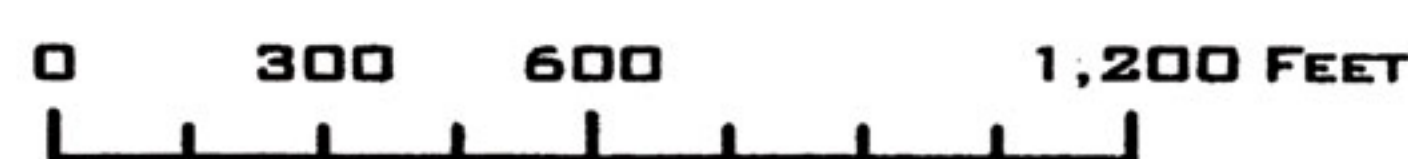
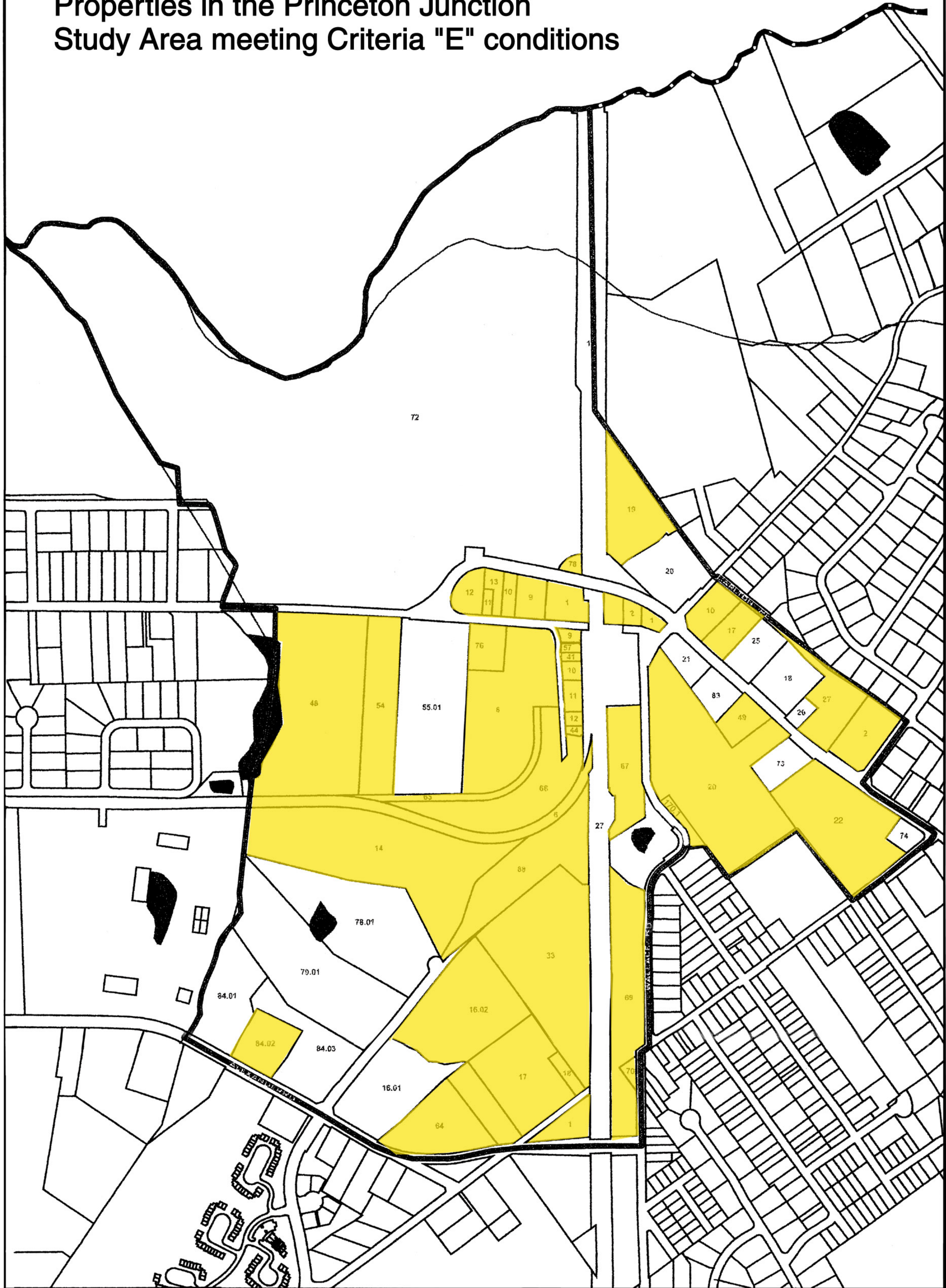
**LEGEND**

- MUNICIPAL BOUNDARY
- REDEVELOPMENT AREA
- STREAMS
- LAKES
- PARCELS

Color for Lot Numbers



# Map 10 Properties in the Princeton Junction Study Area meeting Criteria "E" conditions



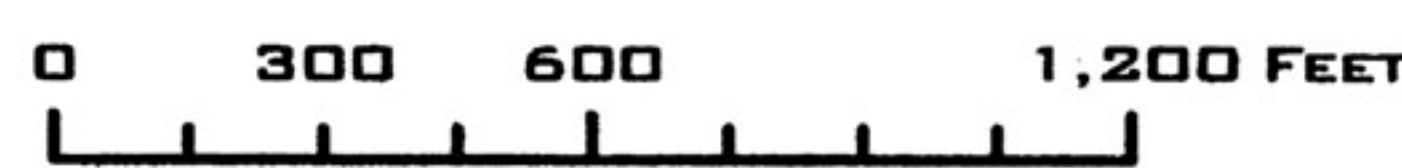
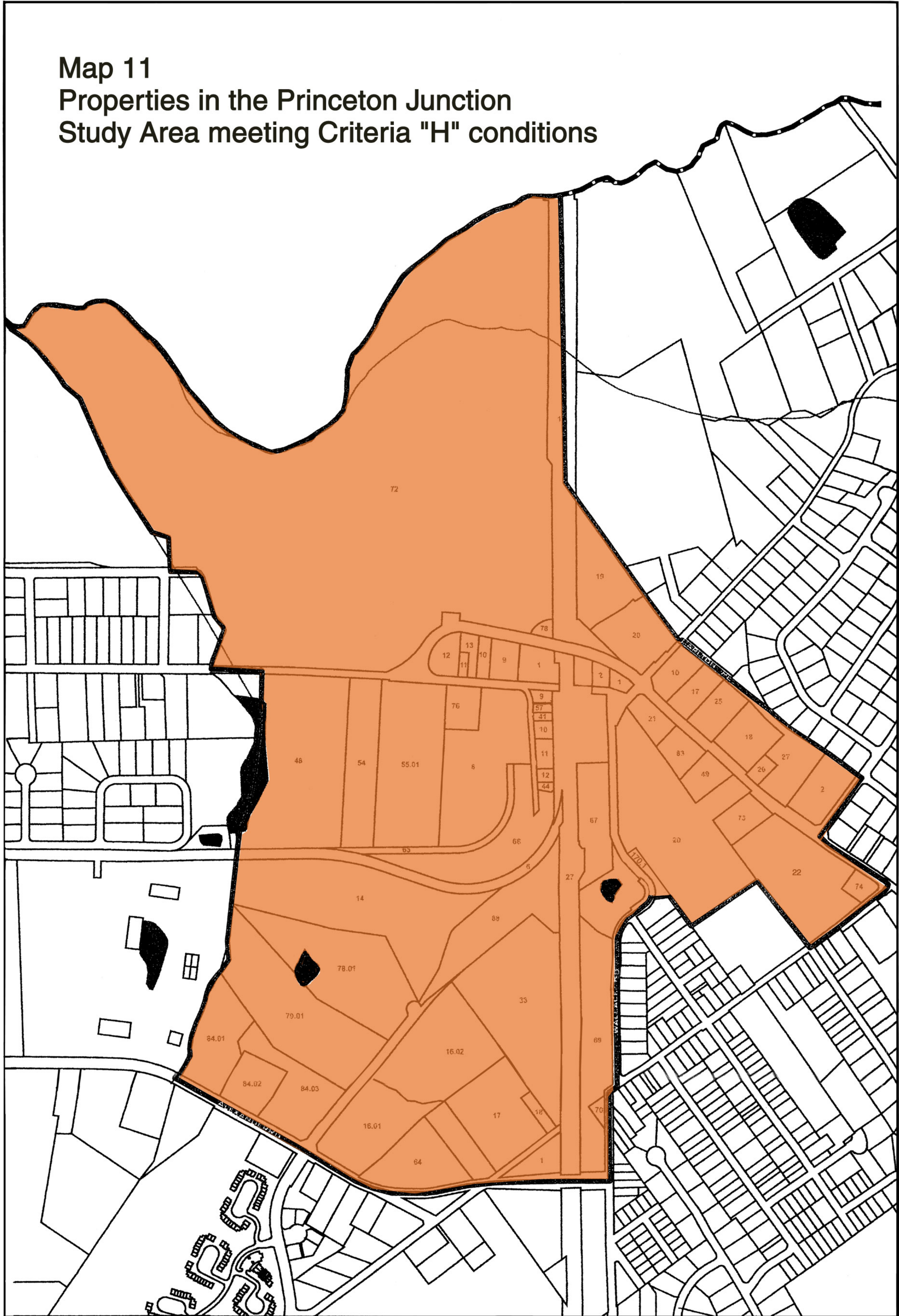
Color for Lot Numbers

### LEGEND

- MUNICIPAL BOUNDARY
- REDEVELOPMENT AREA
- STREAMS
- LAKES
- PARCELS

# Map 11

## Properties in the Princeton Junction Study Area meeting Criteria "H" conditions

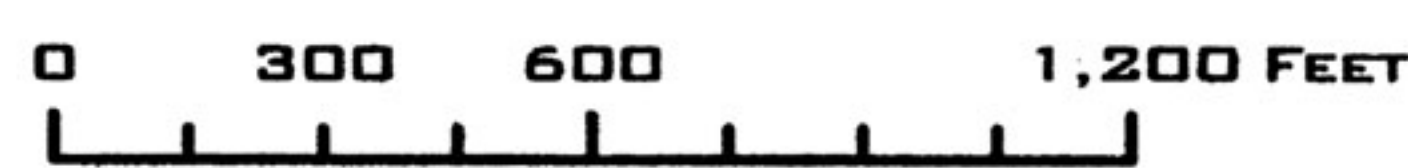


Color for Lot Numbers

### LEGEND

- MUNICIPAL BOUNDARY
- REDEVELOPMENT AREA
- STREAMS
- LAKES
- PARCELS

**Map 12**  
**Properties in the Princeton Junction**  
**Study Area meeting one or more of the**  
**Criteria other than Criteria "H" for determining**  
**an area in need of development**



Color for Lot Numbers

**LEGEND**

-  MUNICIPAL BOUNDARY
-  REDEVELOPMENT AREA
-  STREAMS
-  LAKES
-  PARCELS