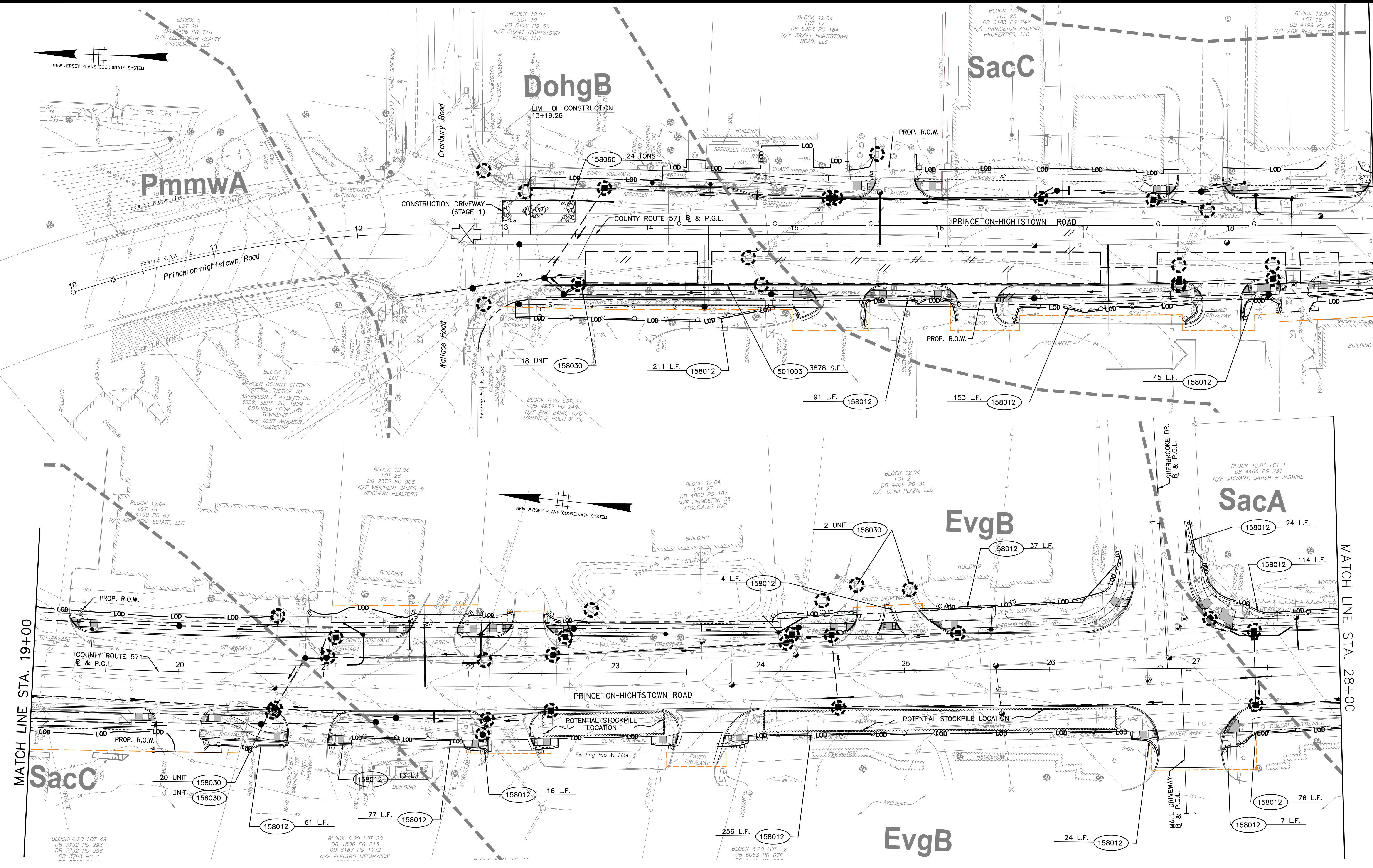
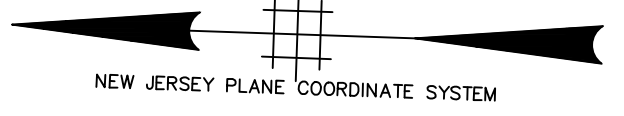


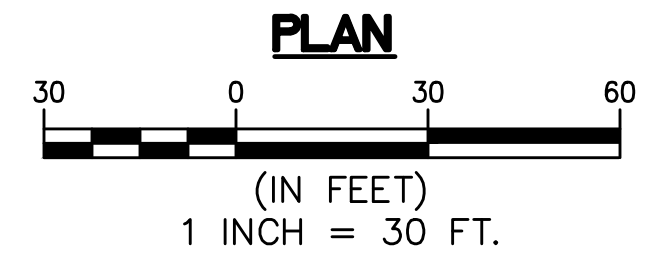
pw:\bgh-eus2-pw-bentley.com\gh-eus2-pw-11\Documents\Transportation\Regional Planning Commission\2005\63-Route 571 Final Design\Technical\Cadd-Contract\1\Sheet Files\06\_Environmental Soil Erosion Sediment Control.dwg, 1/8/2025



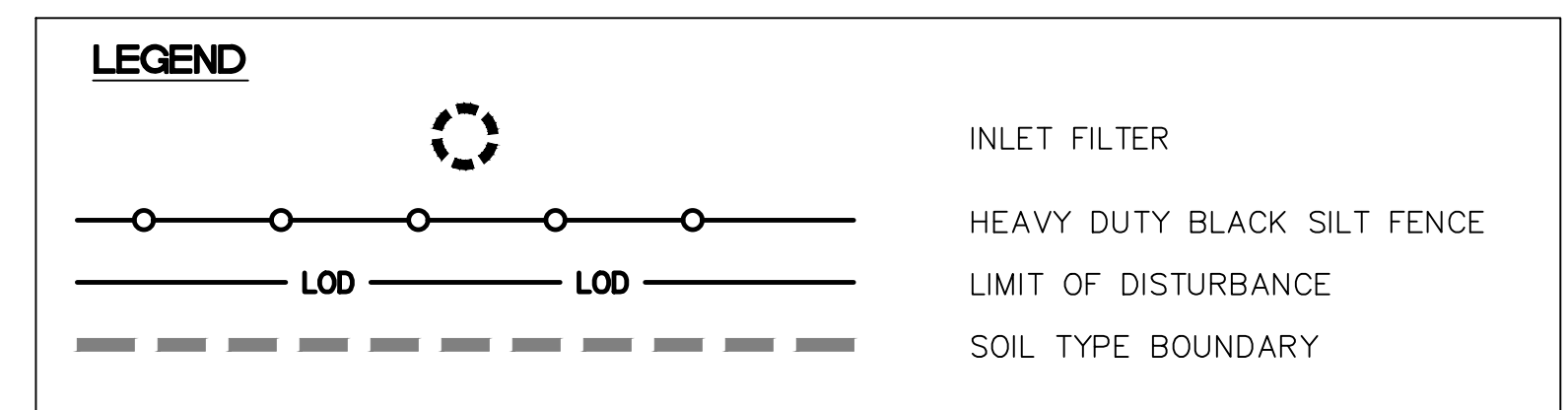
MATCH LINE STA. 19+00

MATCH LINE STA. 28+00

MATCH LINE STA. 19+00



ITEM NO.	TO BE CONSTRUCTED	CONTRACT QUANTITY
158012M	HEAVY DUTY SILT FENCE, BLACK	1209 L.F.
158030M	INLET FILTER TYPE 2, 2'x4'	40 UNIT
158033M	INLET FILTER TYPE 2, 4'x4'	1 UNIT
158060M	CONSTRUCTION DRIVEWAY	24 TONS
501003P	TEMPORARY SHEETING	3878 S.F.



**wsp**

MICHAEL DUNN  
PROFESSIONAL ENGINEER  
N.J. LIC. No. 24GE04500000

DATE \_\_\_\_\_

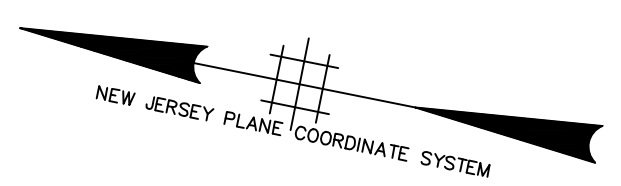
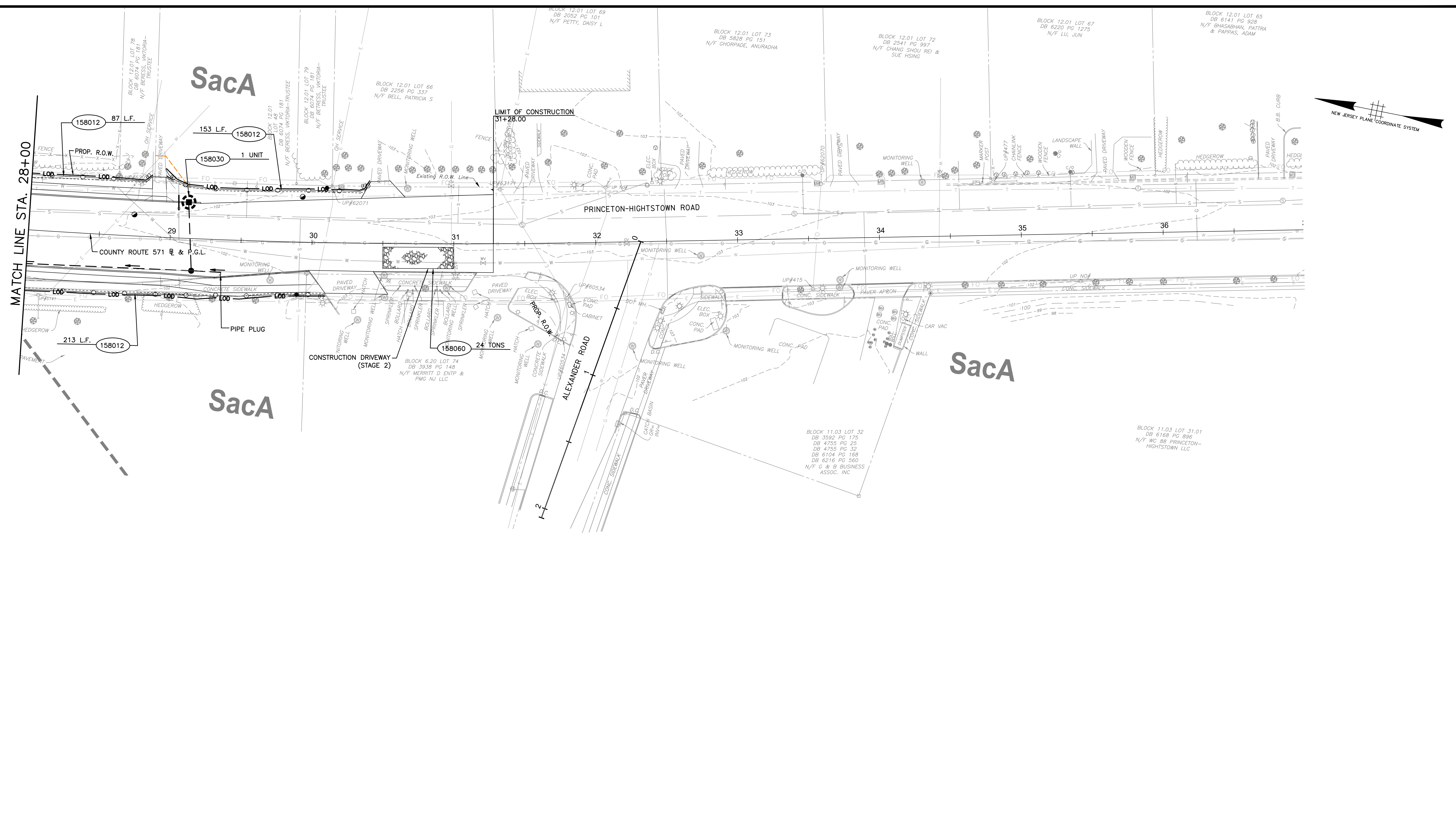
**ENVIRONMENTAL, SOIL EROSION & SEDIMENT CONTROL PLANS**

**IMPROVEMENTS TO PRINCETON-HIGHTSTOWN ROAD COUNTY ROUTE No. 571**  
FROM STA. 13+19.00 TO STA. 30+00.00  
TOWNSHIP OF WEST WINDSOR, MERCER COUNTY

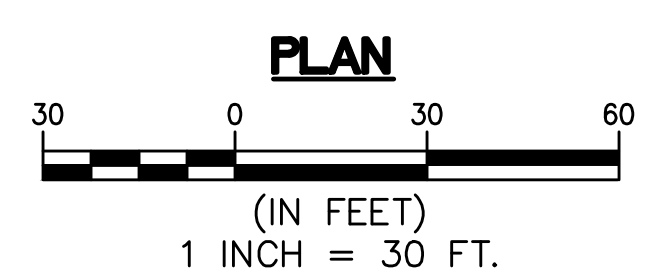
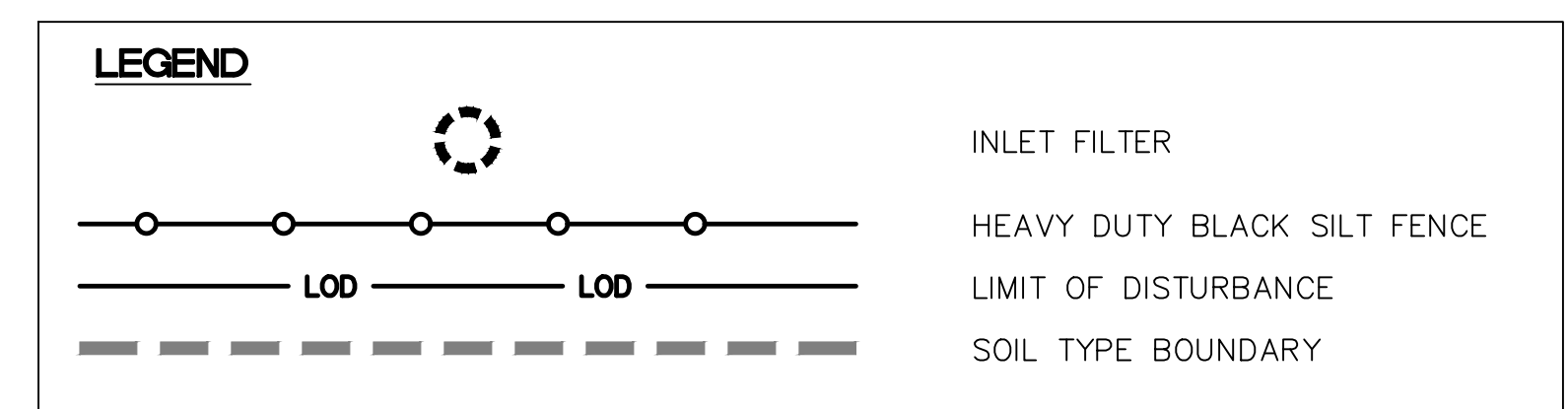
DES. BY	DATE	SCALE	AS SHOWN	SHEET NO.
CHKD BY	DATE	FLD. W. BY		
DRAWN BY	DATE	BK.		
CHKD BY	DATE	APP'D BY		

EP-3  
EP-4

pw:\bgh-eus2-pw-bentley.com\gh-eus2-pw-11\Documents\Transportation Commission\2005\63-Route 571 Final Design\Technical\Cadd-Contract\1\Sheet Files\06\_Environmental Soil Erosion Sediment Control.dwg, 1/8/2025



ITEM NO.	TO BE CONSTRUCTED	CONTRACT QUANTITY
158012M	HEAVY DUTY SILT FENCE, BLACK	453 L.F.
158030M	INLET FILTER TYPE 2, 2'x4'	1 UNIT
158060M	CONSTRUCTION DRIVEWAY	24 TONS



**wsp**

MICHAEL DUNN  
PROFESSIONAL ENGINEER

N.J. LIC. No. 24GE04500000

DATE \_\_\_\_\_

**ENVIRONMENTAL, SOIL EROSION & SEDIMENT CONTROL PLANS**

**IMPROVEMENTS TO PRINCETON-HIGHTSTOWN ROAD**  
**COUNTY ROUTE No. 571**  
FROM STA. 13+19.00 TO STA. 30+00.00  
TOWNSHIP OF WEST WINDSOR, MERCER COUNTY

DES. BY	DATE	SCALE	AS SHOWN	SHEET No.
CHYD BY	DATE	FLD. WK. BY		
DRAWN BY	DATE	BK.		
CHKD BY	DATE	APP'D BY		

EP-4  
EP-4