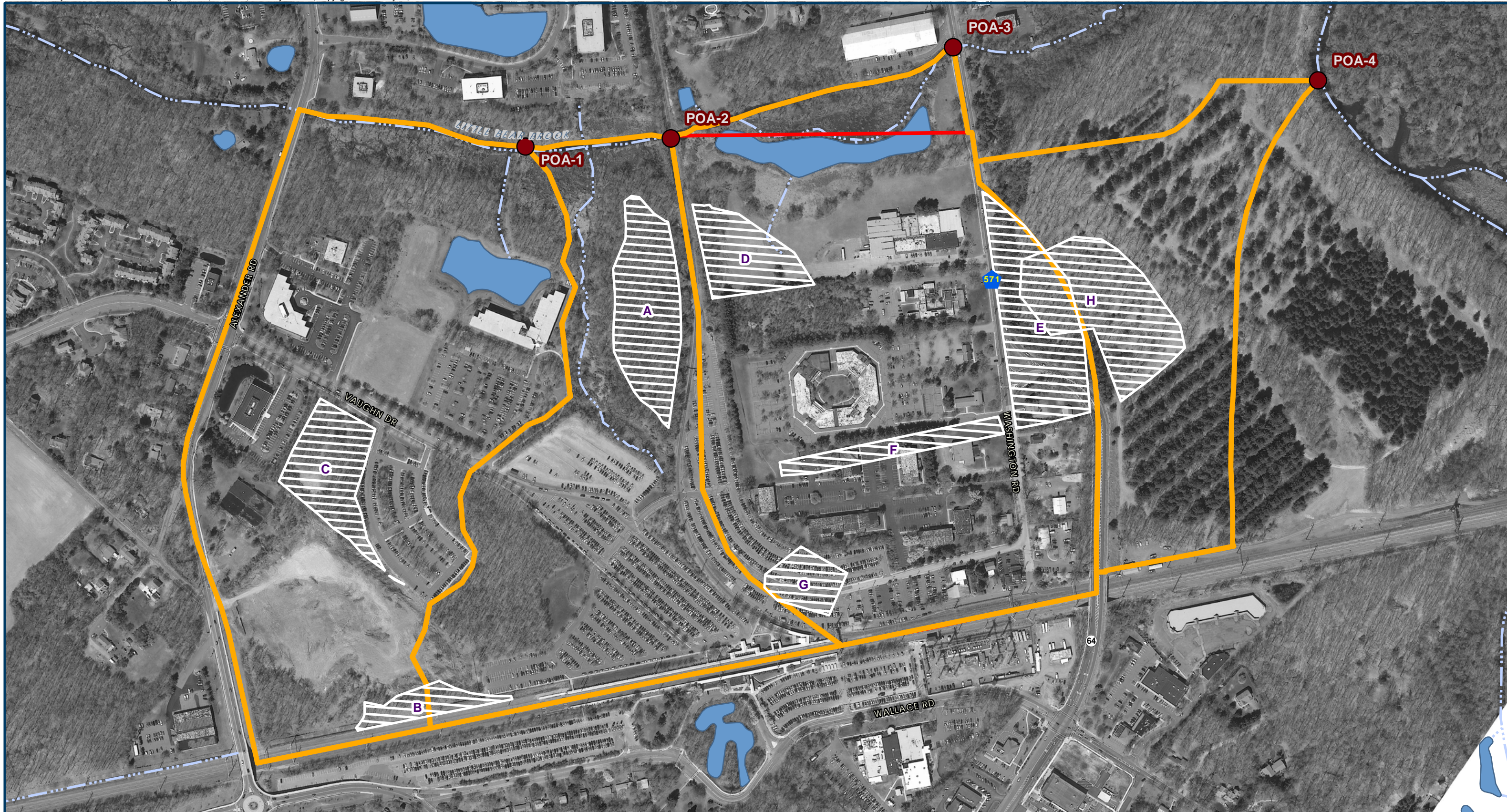




**Appendix E:
Best Management Practices**



DRAINAGE AREA AND POINT OF ANALYSIS




REGIONAL STORMWATER MANAGEMENT ANALYSIS
 REDEVELOPMENT AREA
 WEST WINDSOR TOWNSHIP
 MERCER COUNTY, NEW JERSEY



1 inch = 350 feet
 0 150 300 Feet

-  Project Area
-  Drainage Area
-  Point of Analysis

Legend

-  Potential Stormwater BMP Location
-  Water Body
-  Stream

Princeton Hydro



NOTES
 1. Zoning boundary, project area (RP zones 1 - 6; 10 partial), and parcel limits obtained from West Windsor Township.
 2. Princeton Hydro delineated drainage areas and selected points of analysis based on existing topography and understanding of the project scope.
 3. Streams and Water bodies obtained from NJDEP GIS website: www.state.nj.us/dep/gis/
 Coordinate System: NAD 1983 StatePlane New Jersey FIPS 2900 Feet
 Projection: Transverse Mercator

